

JALEES MIRZA
ROLL NO : (09)
PRESENTATION SUBMITTED TO : DR ASIF SB
TOPIC : FLEAS



- ❑ **Fleas** are the insects forming the order **Siphonaptera**.
- ❑ They are wingless,
- ❑ Having mouthparts adapted for piercing skin and sucking blood.
- ❑ Fleas are external parasites , living by hematophagy off the blood of mammals and birds.

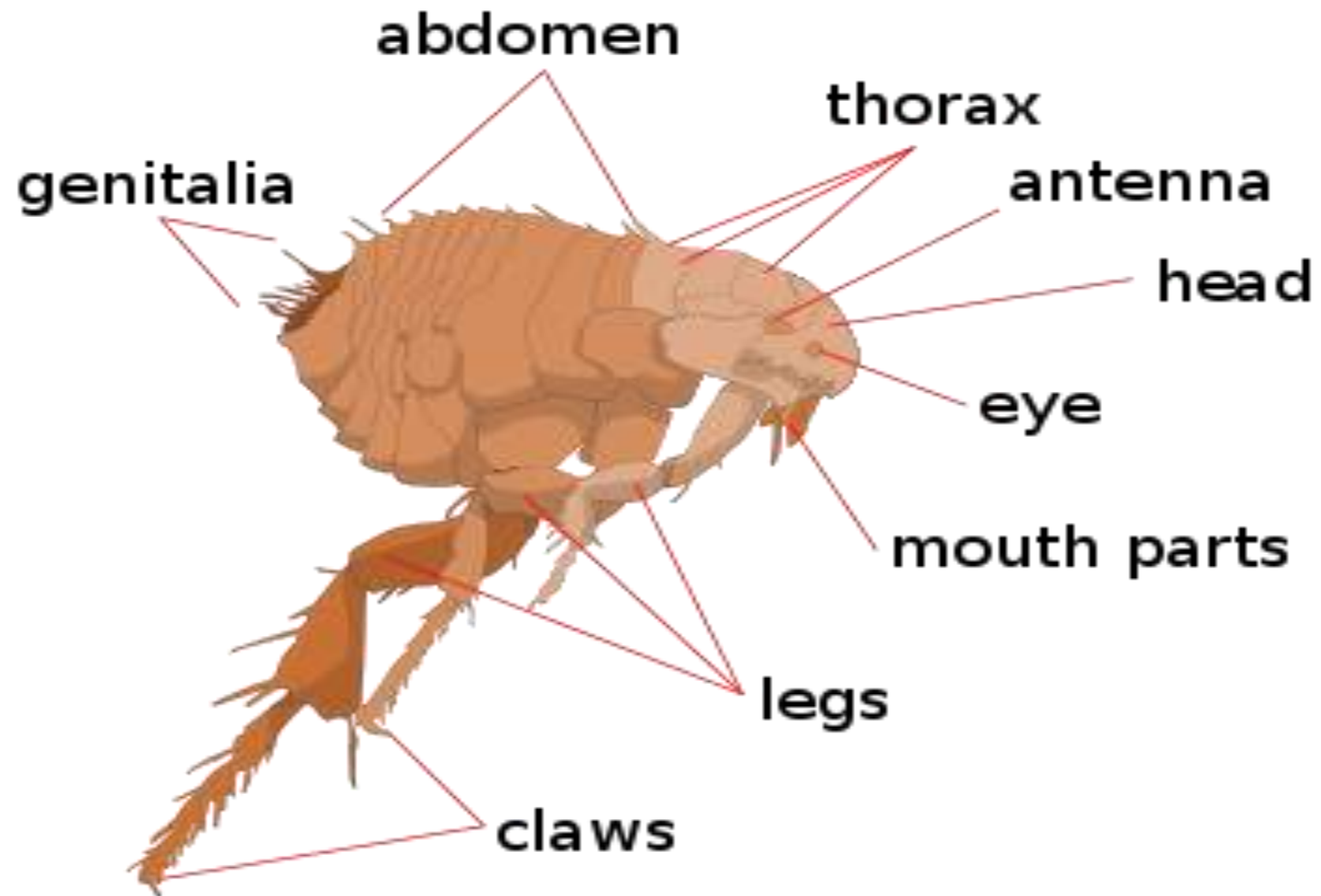
- Scanning electron microscope (SEM) picture of a flea



Scientific Classification :

Kingdom:	<u>Animalia</u>
Phylum:	<u>Arthropoda</u>
Class:	<u>Insecta</u>
Subclass:	<u>Pterygota</u>
Infraclass:	<u>Neoptera</u>
Superorder:	<u>Endopterygota</u>
Order:	Siphonaptera

BODY PARTS :



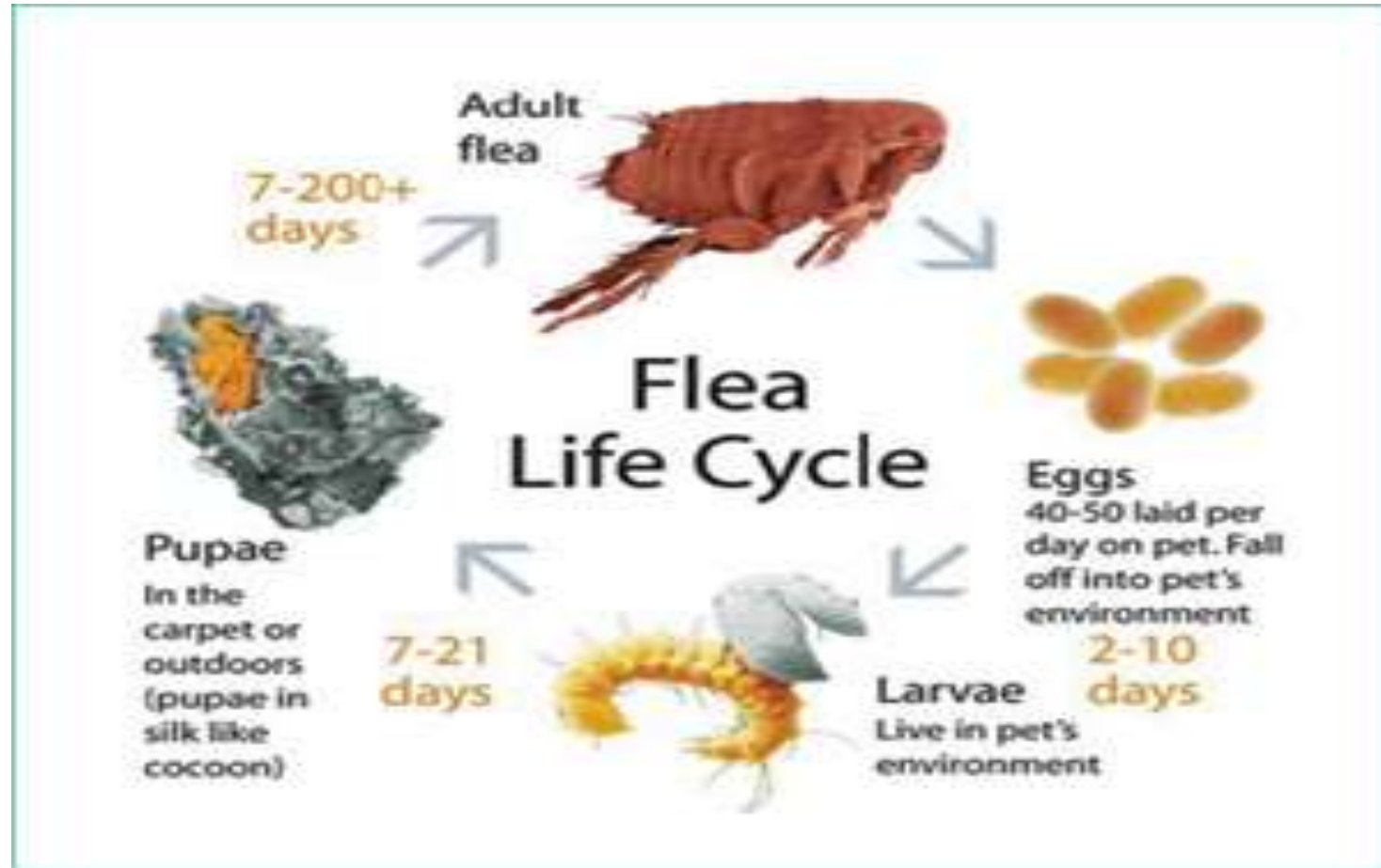
Life Cycle :

1) Eggs

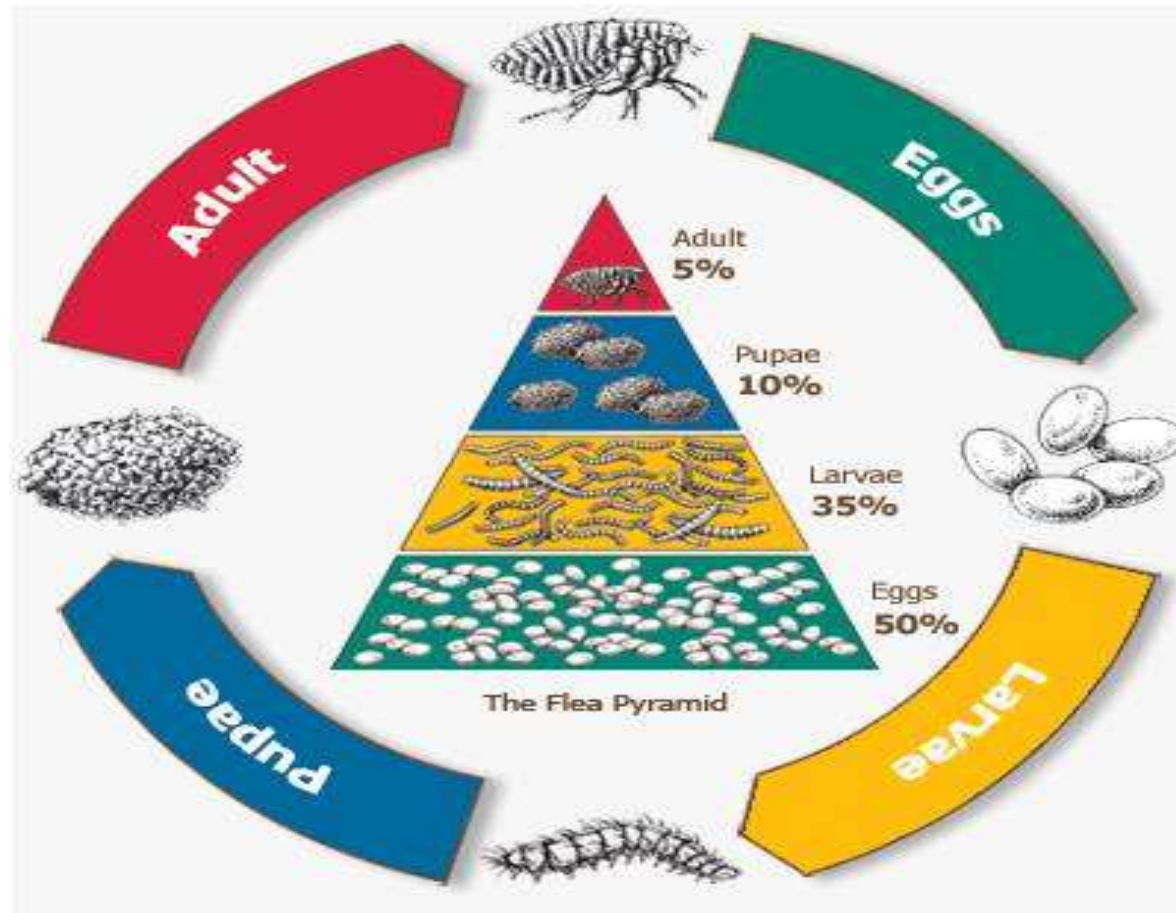
2) Larvae

3) Pupae

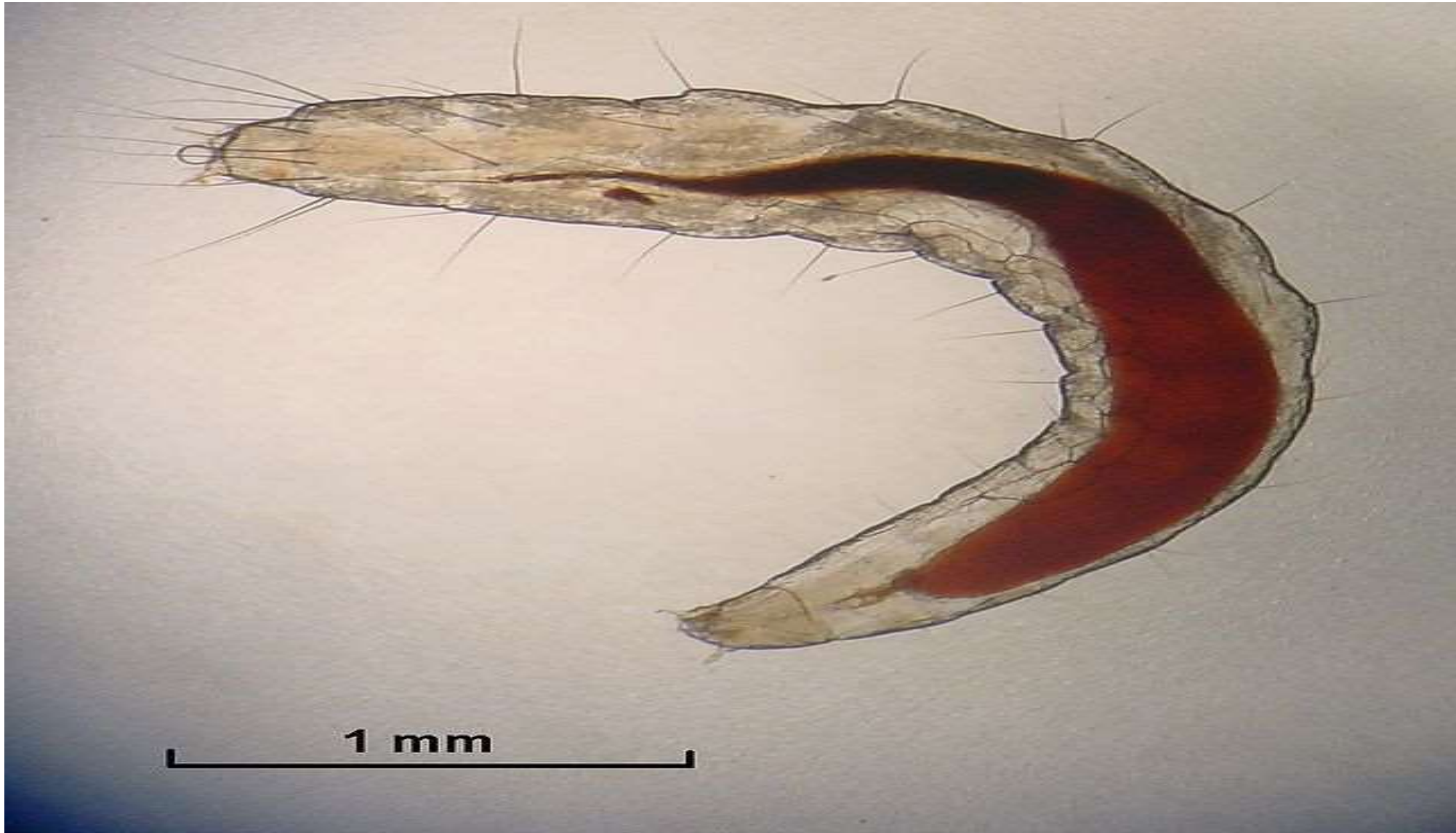
4) Adult



HOW IS THIS ???



Micrograph of a Flea larva :



Some flea species include :

☐ **Cat flea** (*Ctenocephalides felis*)



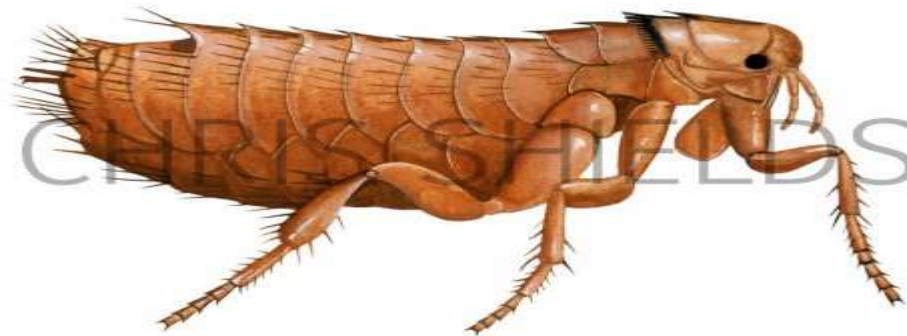
☐ **Dog flea** (*Ctenocephalides canis*)



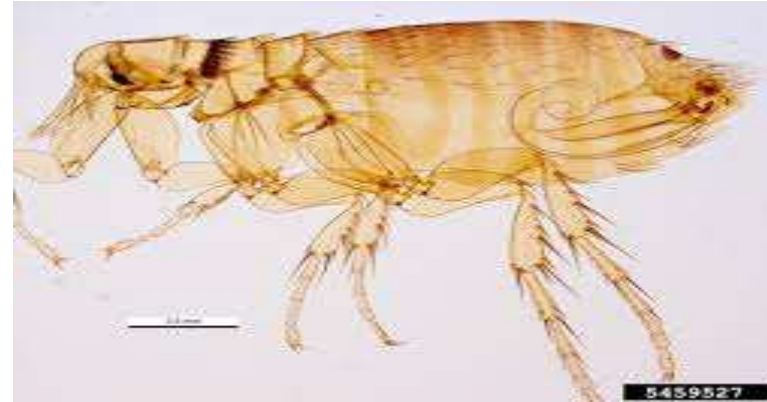
❑ **Human flea (*Pulex irritans*)**



❑ **Moorhen flea (*Dasypsyllus gallinulae*)**



❑ Northern rat flea (*Nosopsyllus fasciatus*)



❑ Oriental rat flea (*Xenopsylla cheopis*)



