



**Anatomy of foot , shoeing tools
,types of shoes and nails**

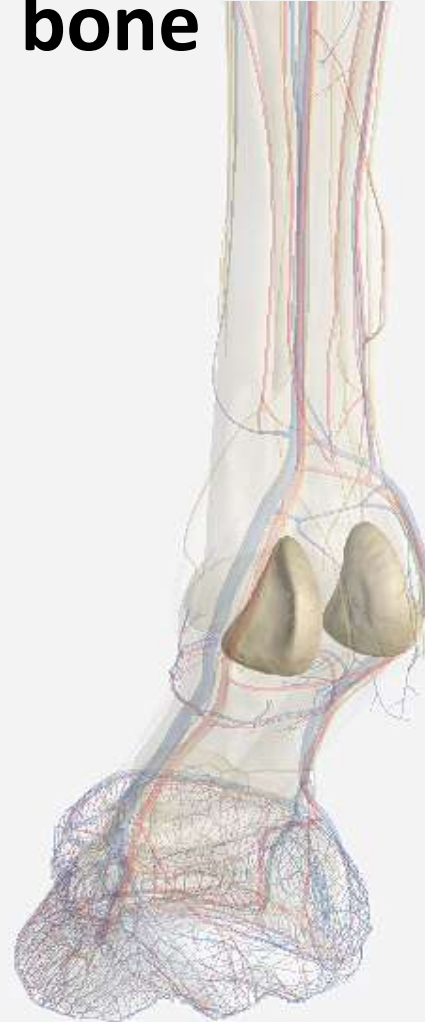
Anatomy of foot , shoeing tools, types of shoes and nails

By-Ali Saqlain student of veterinary
sciences UAF Pakistan

Anatomy of Hoof and limb



Proximal sesamoid bone



Fourth metacarpal bone



Second metacarpal bone



Third metacarpal bone



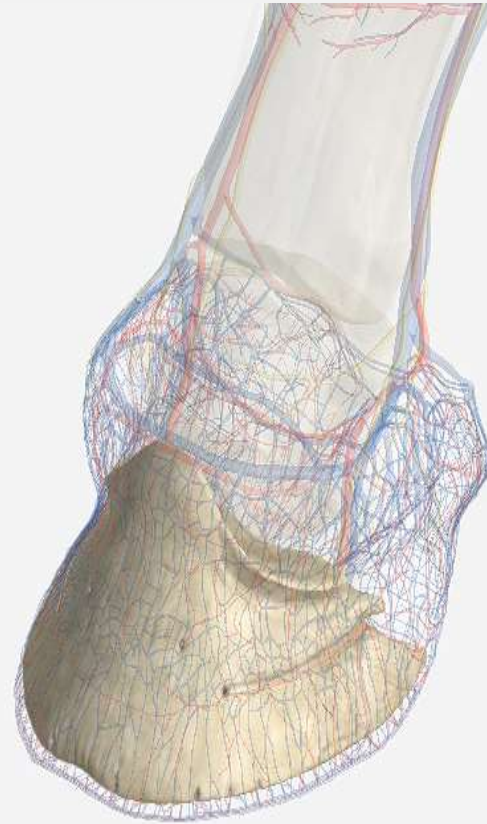
First phalanx

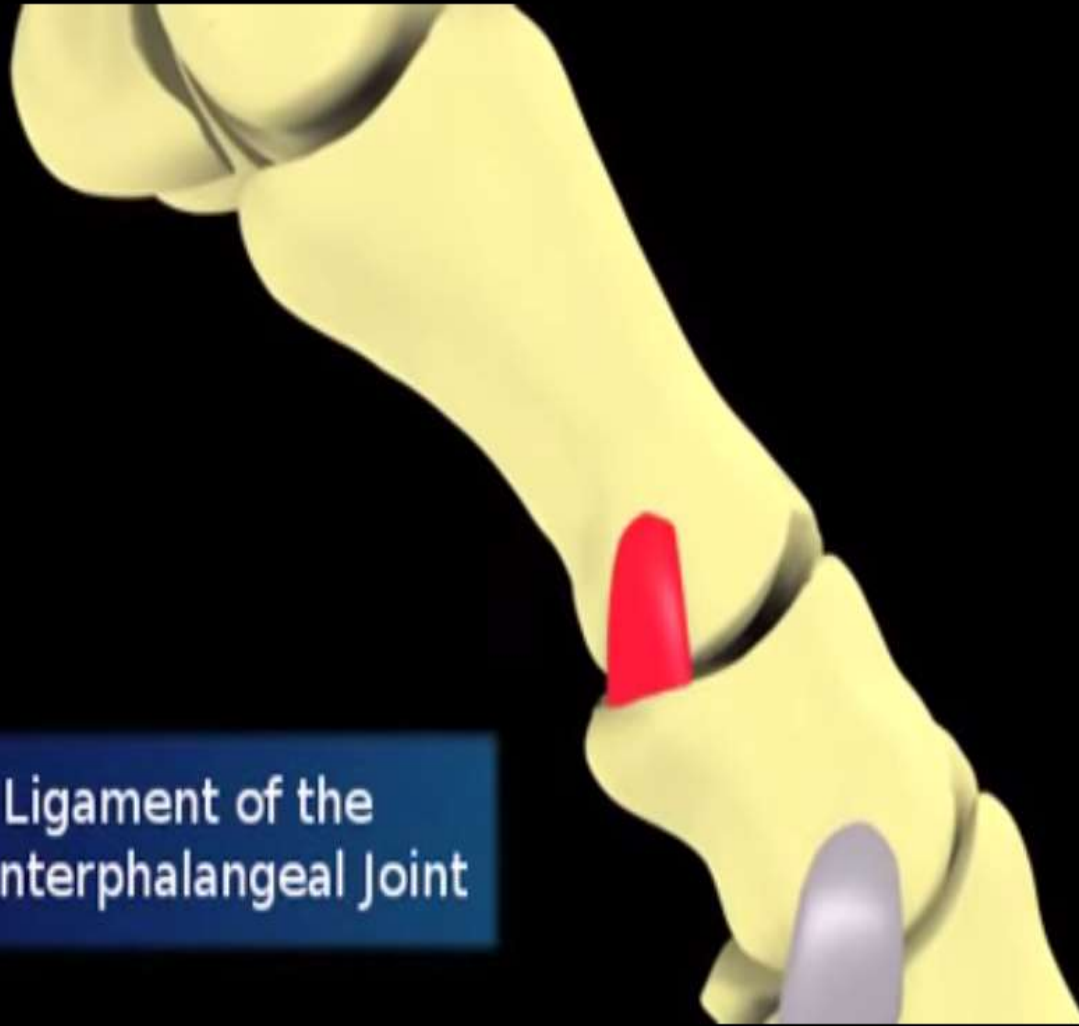


Second phalanx



Third phalanx



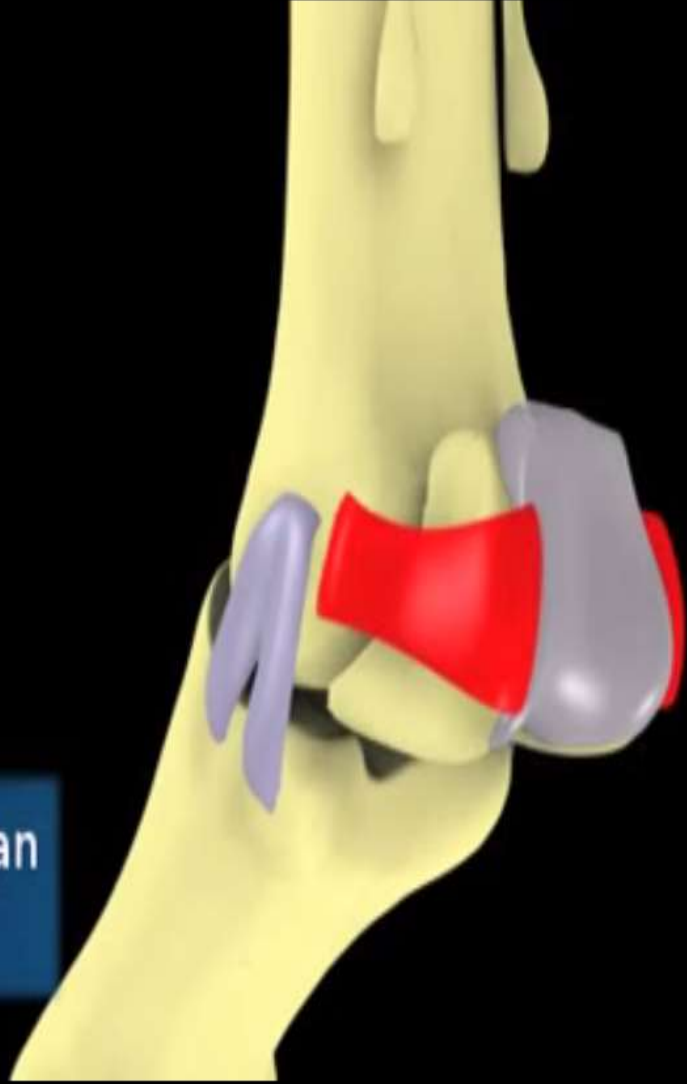


Collateral Ligament of the
Proximal Interphalangeal Joint

Intersesamoidean
Ligament and
Fibrocartilage



Collateral Sesamoidean
Ligament





Cruciate Sesamoidean
Ligaments

Straight Sesamoidean
Ligament



Navicular Suspensory
Ligament



Lateral Digital
Extensor Tendon



Common Digital
Extensor Tendon



Interosseous
Ligament

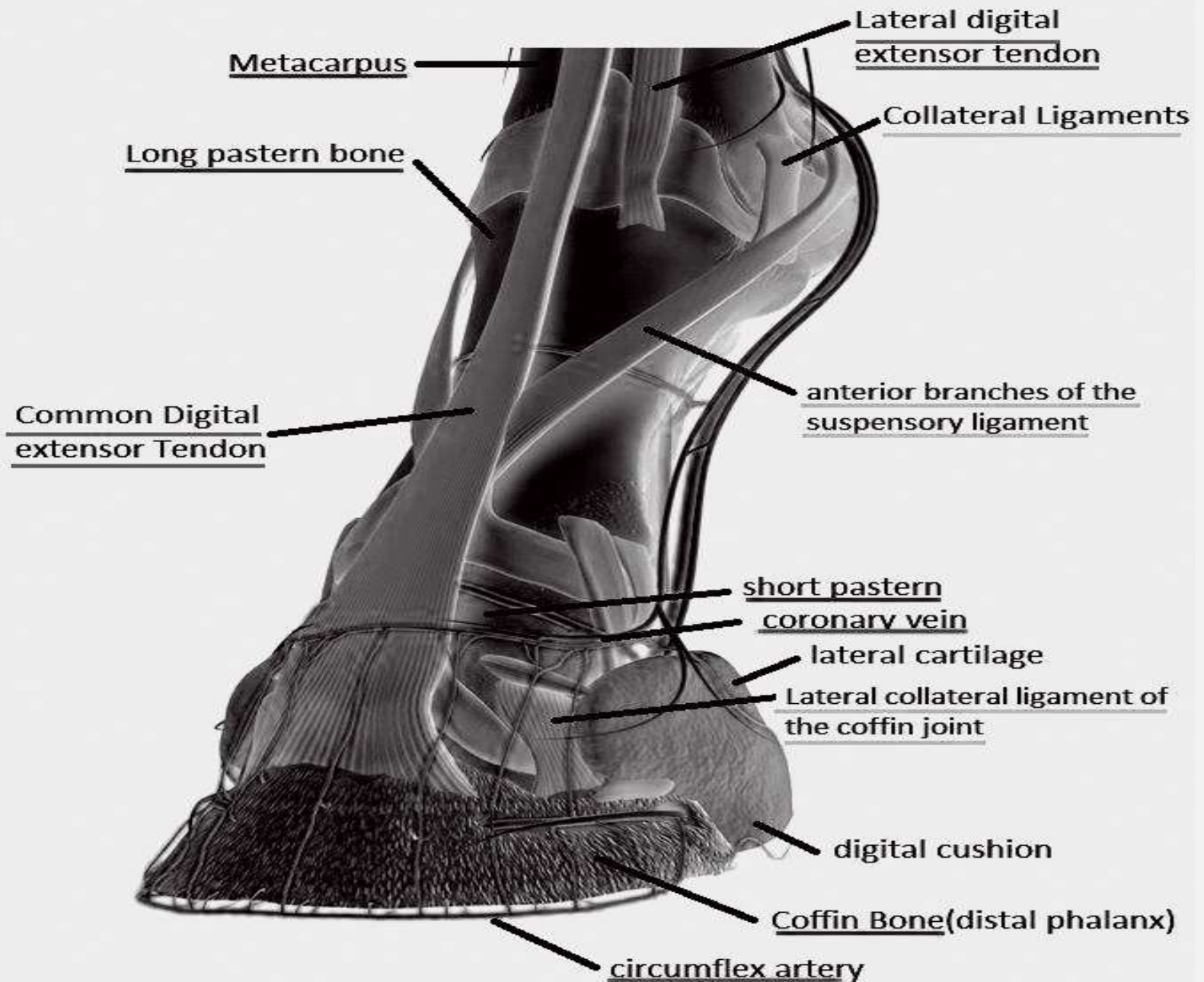


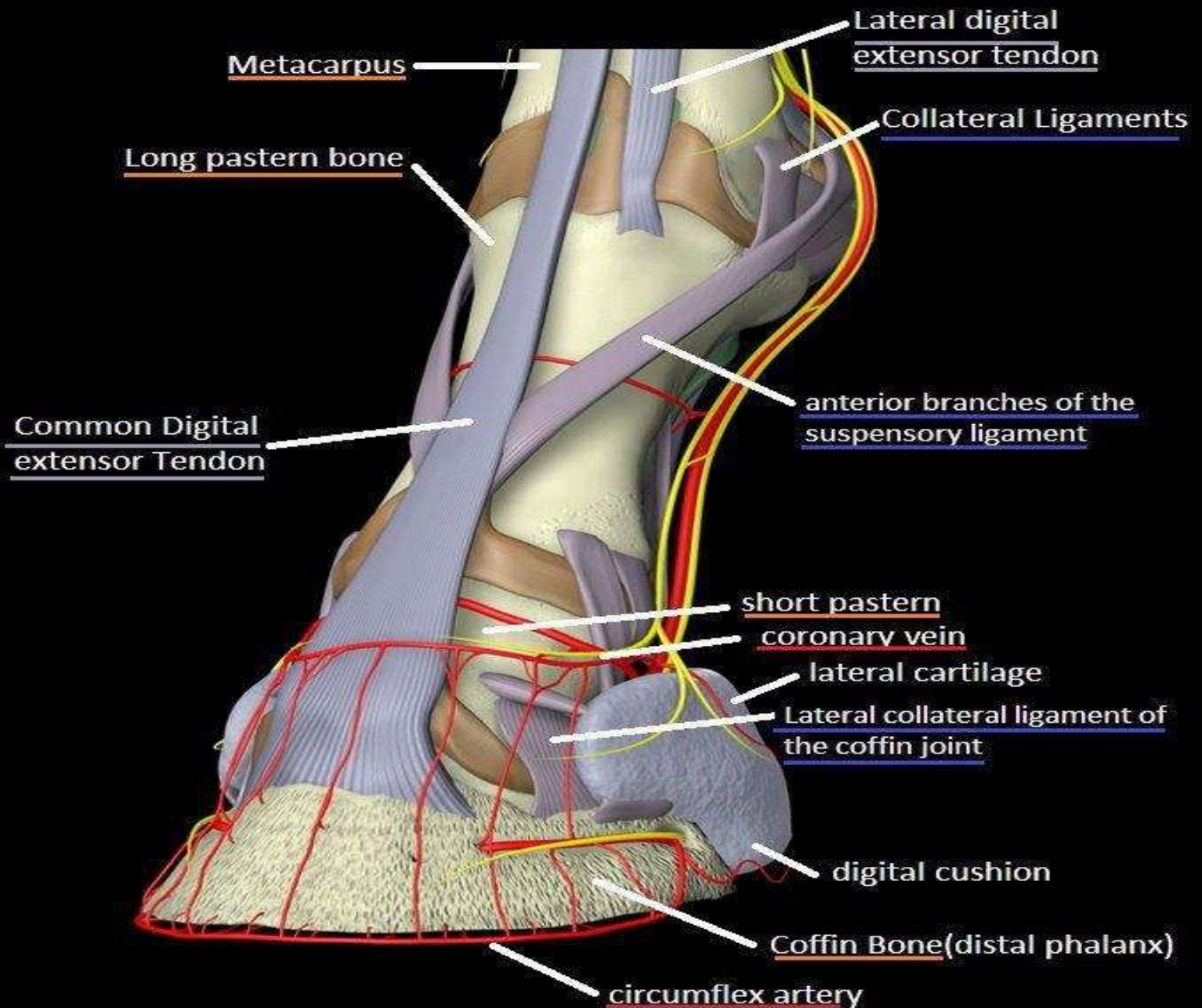
Deep Digital
Flexor Tendon



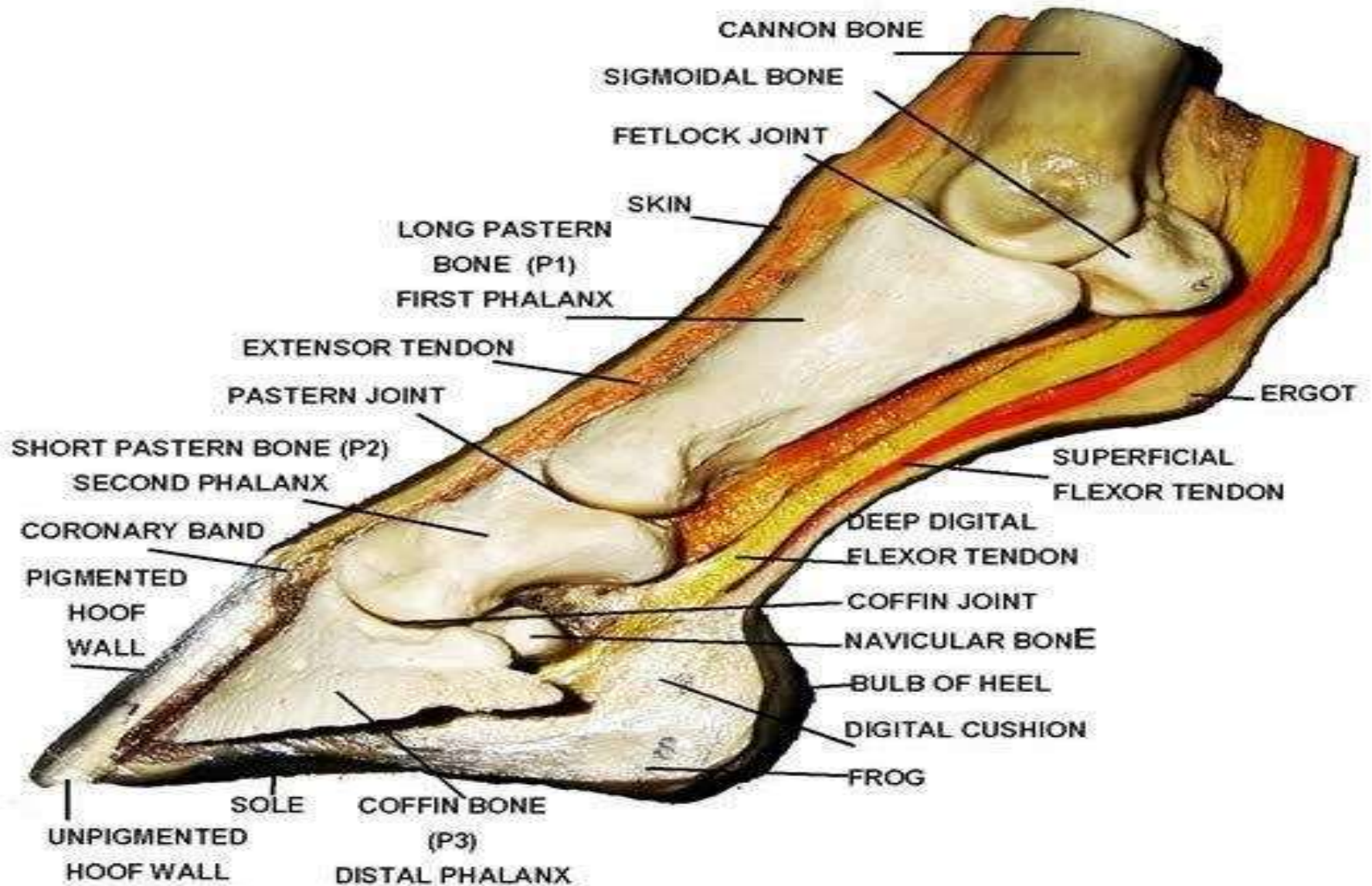
Superficial Digital Flexor Tendon



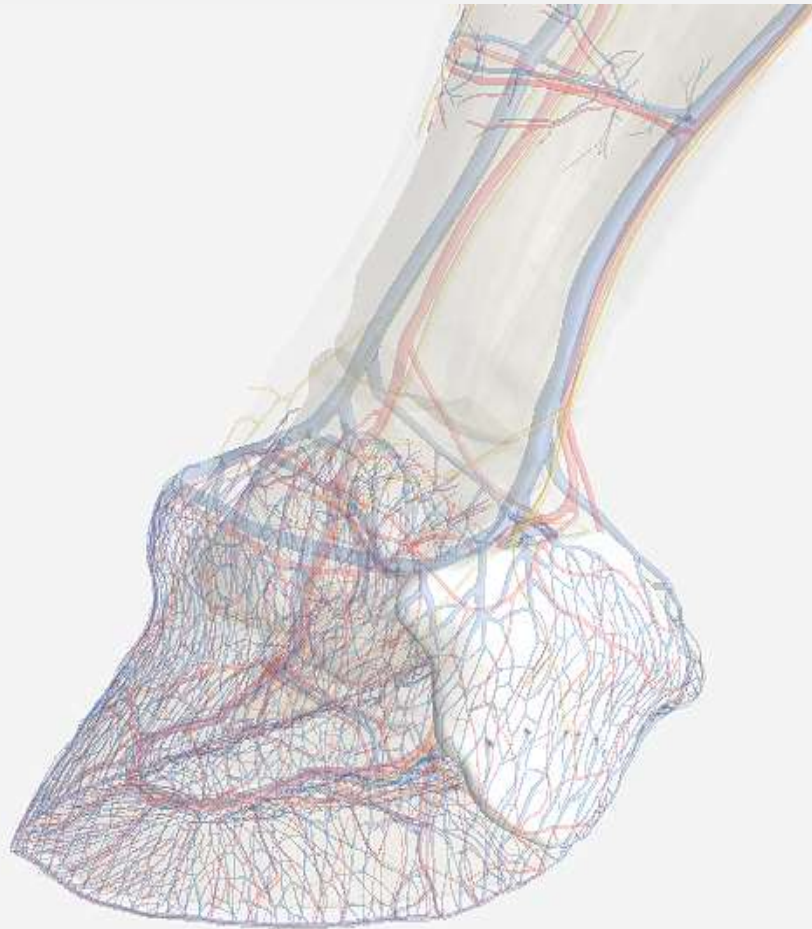




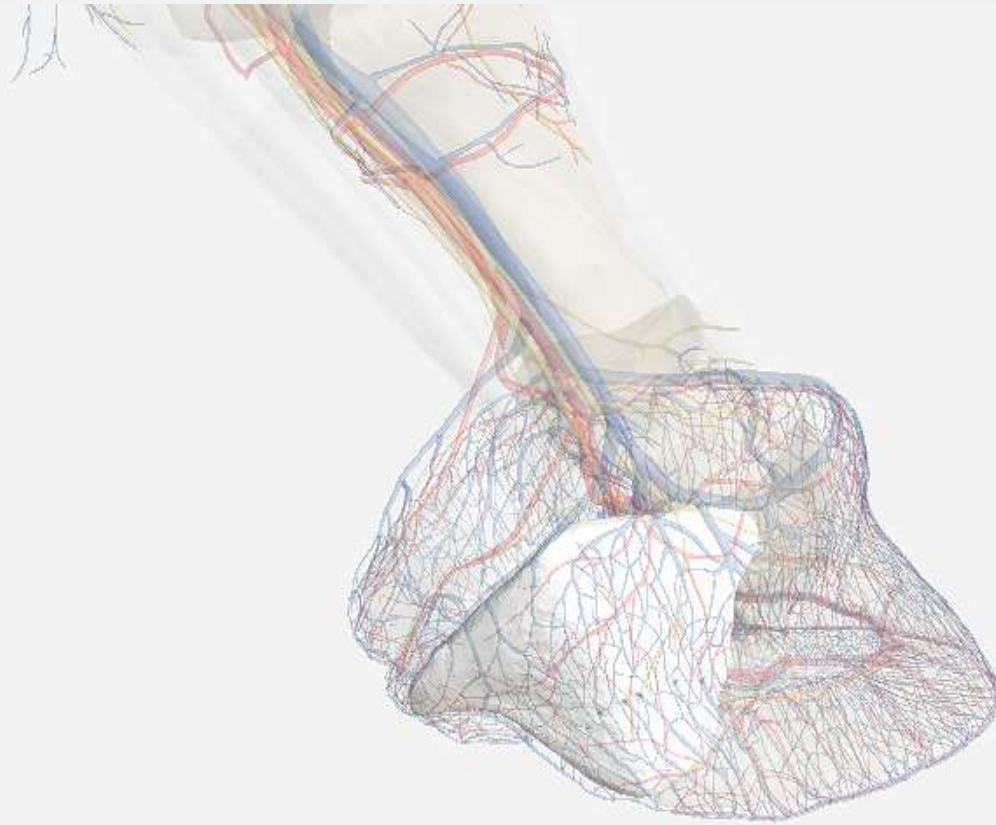
BASIC HOOF ANATOMY

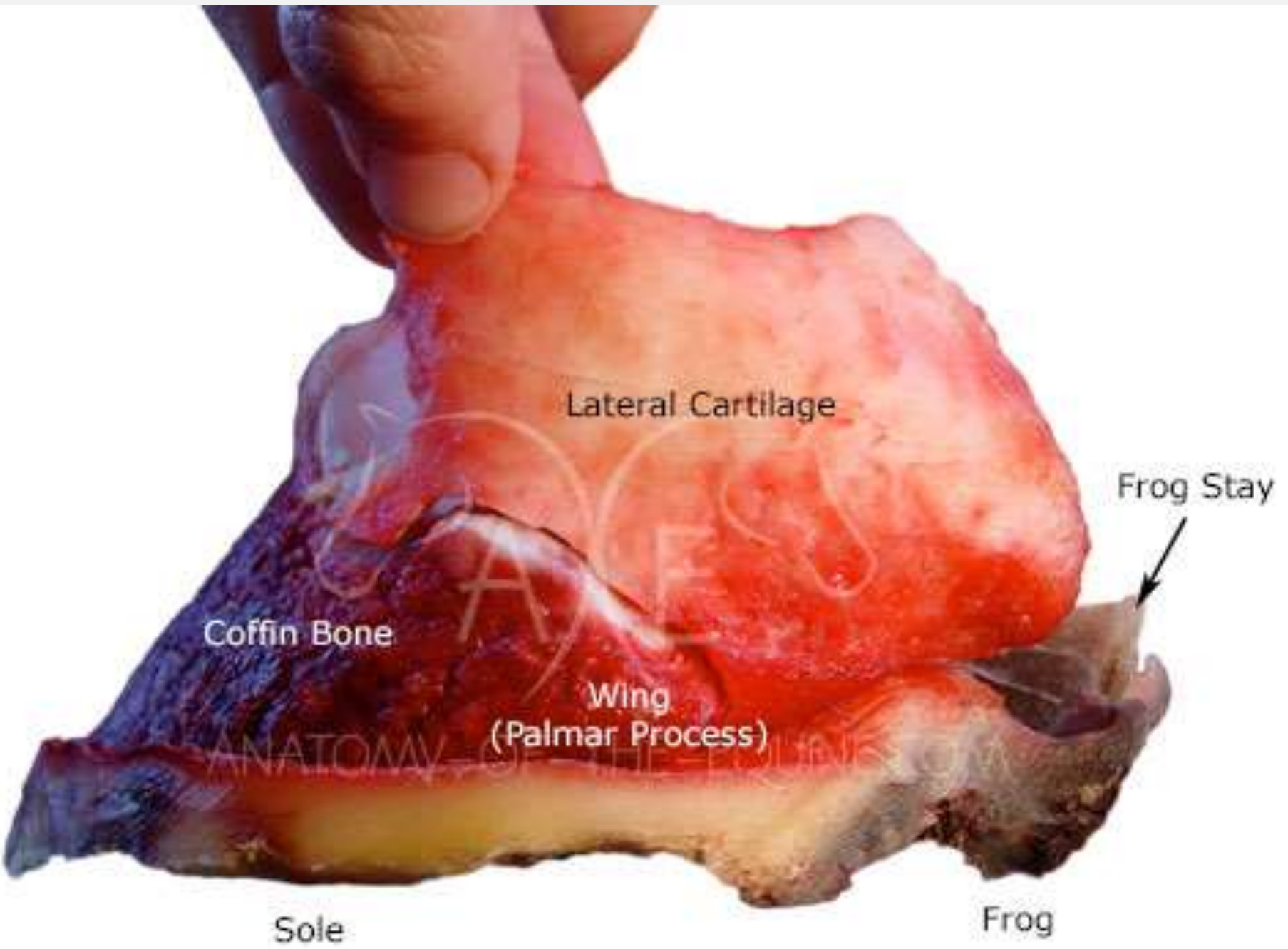


Lat. Cartilage of third phalanx



Med cartilage of third phalanx





Lateral Cartilage

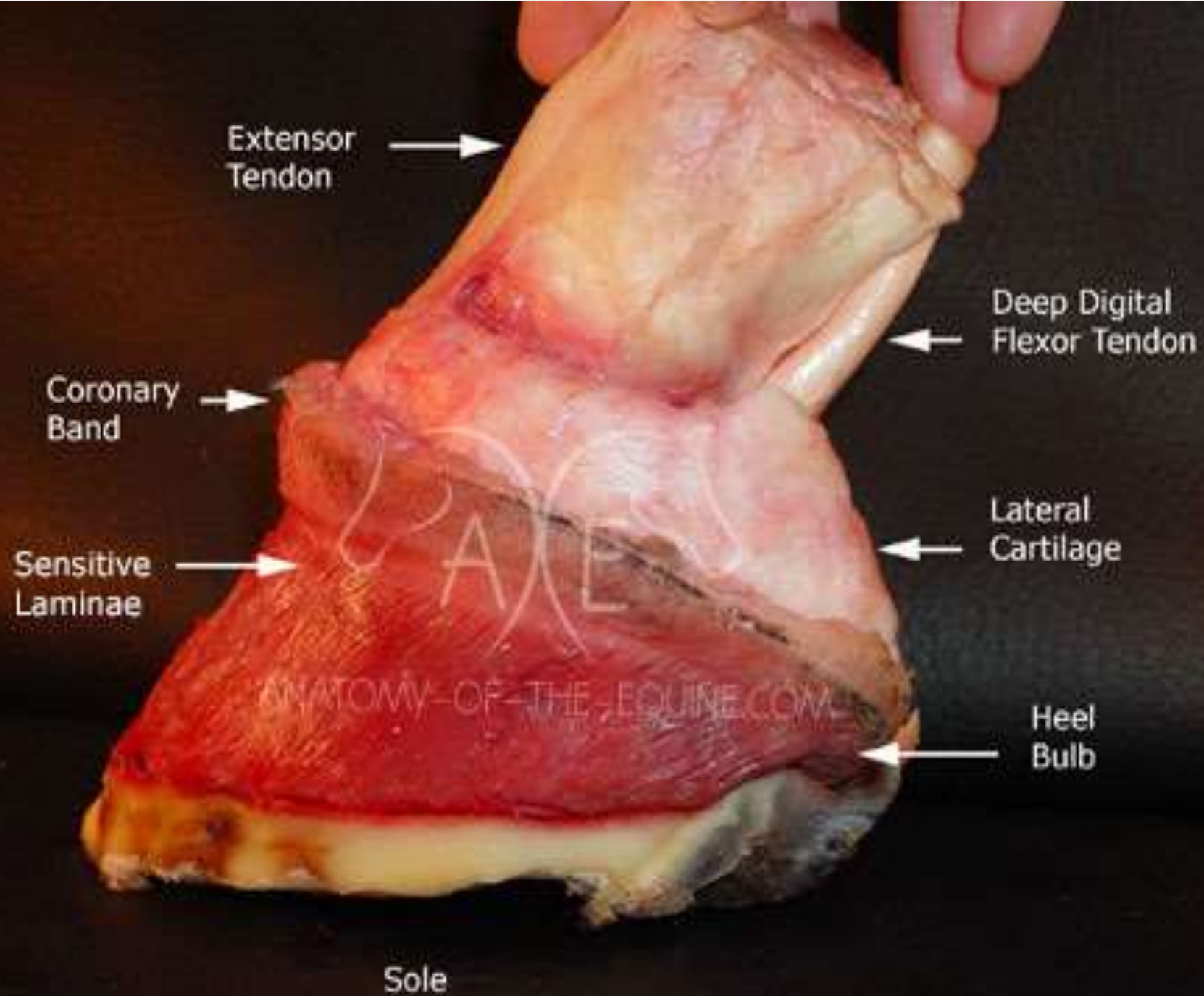
Frog Stay

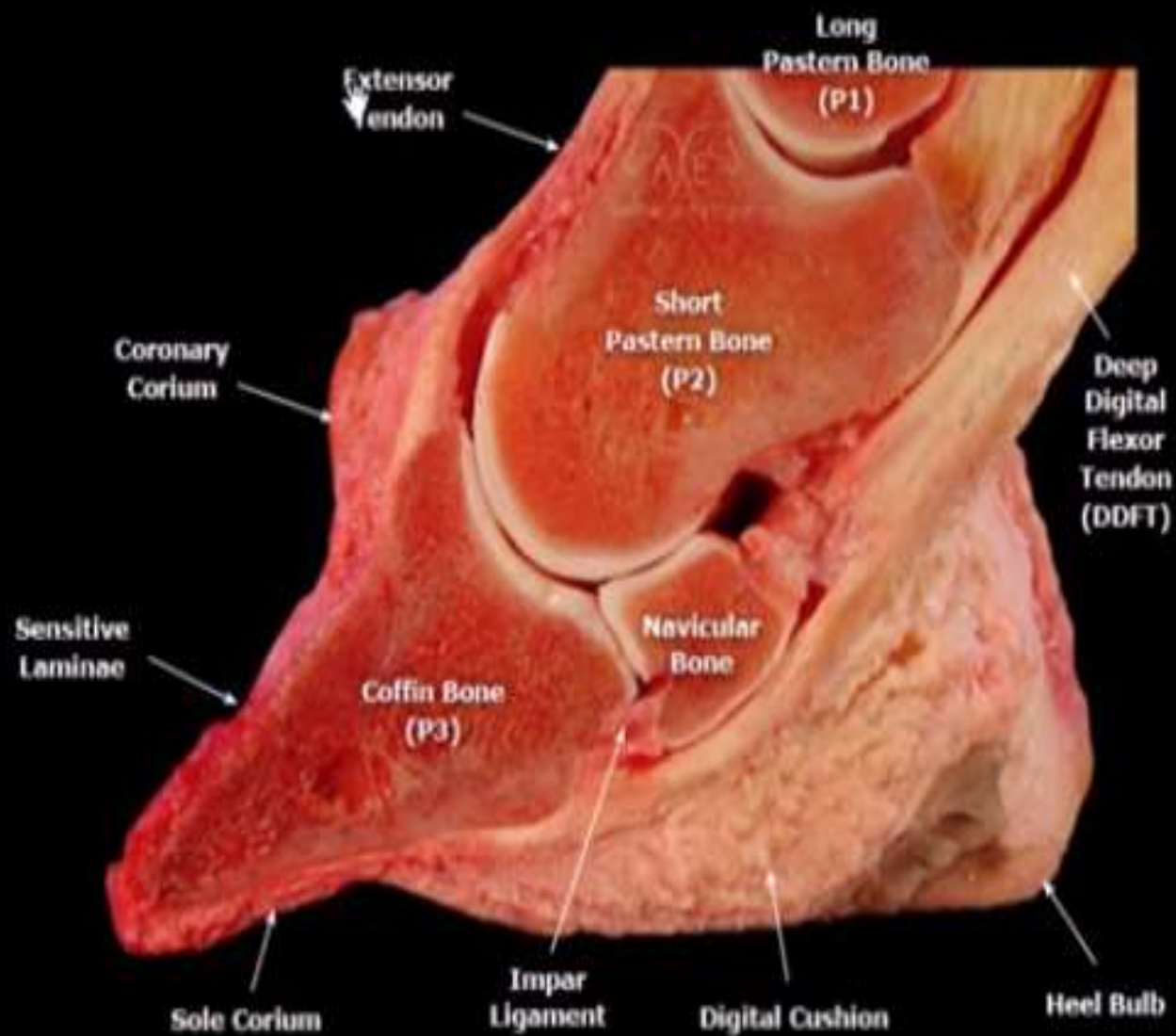
Coffin Bone

Wing
(Palmar Process)

Sole

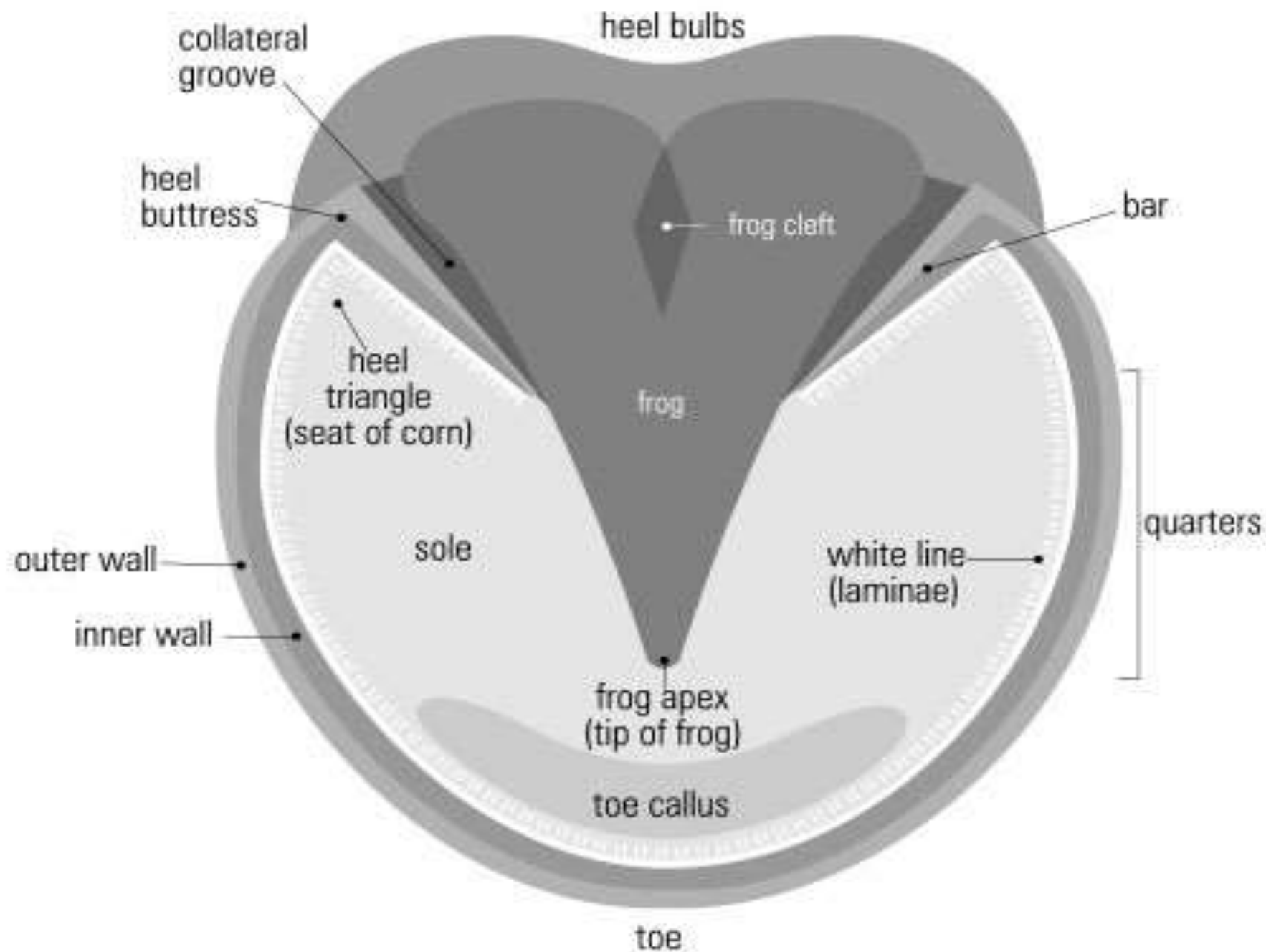
Frog





Corium





Aprons/Chaps

You need chaps to protect your legs from the horse's hoof and legs. Chaps also help you hold the hoof firmly between your knees. Farriers need thick leather pads on their chaps to protect against nails should the horse pull while nailing .



Hoof Pick

A hoof pick is used to clean debris from the bottom of the hoof, along the grooves on the sides of the frog, and from the sole area.



Knives

A hoof knife is for trimming away loose dried-out sole.

The hoof knife is also used to trim off loose and ragged frog.



Double Edge Knife



Loop Knife



Swiss Hoof Trimmer
More commonly used
on cows

Rasp

To File off any flaring on the sides using rasp.



Hoof gauge

Hoof gauge is used to match pairs of feet in their angle to the ground. farriers are taught that the angles of the horse's shoulder, pastern, and hoof at the toe should be relative to each other.



Disc Base Hoof Stand

- Hoof stand will support the horse's foot while it's being trimmed and shod.



Hoof tester

- The hoof tester is a very practical gadget that allows us to examine the hoof for sensitivity and pain. It is used to help to diagnose various forms of lameness associated with the hoof.



Clinch-Cutter

- Clinch-Cutter is designed to straighten or break the nail clinches.



Nail pullers

- Designed for easy pulling of nails one at a time from the shoe crease.



Hammer

- **A 10oz to 12oz hammer** used to drive horse shoe nails into the hoof.
- **Flatter hammer** is used to hot metal.
- **Rounding hammer (2lb hammer)** with convex face on one side and flat face on the other – used to shape a hot shoe when laying on the anvil.



Forge

- Forge is a heat source designed to heat metal to a degree in which it can be bent easily



Tongs

- Tongs part holds shoe as it is placed and removed from the forge.



Pritchel

- Pritchel is used to punch holes in pads, through bar stock or shoes, to help remove nails from pulled shoes, and to sometimes widen the nail hole slots in the shoe.



Anvil

- a small steel cutting tool use to cut hot matel



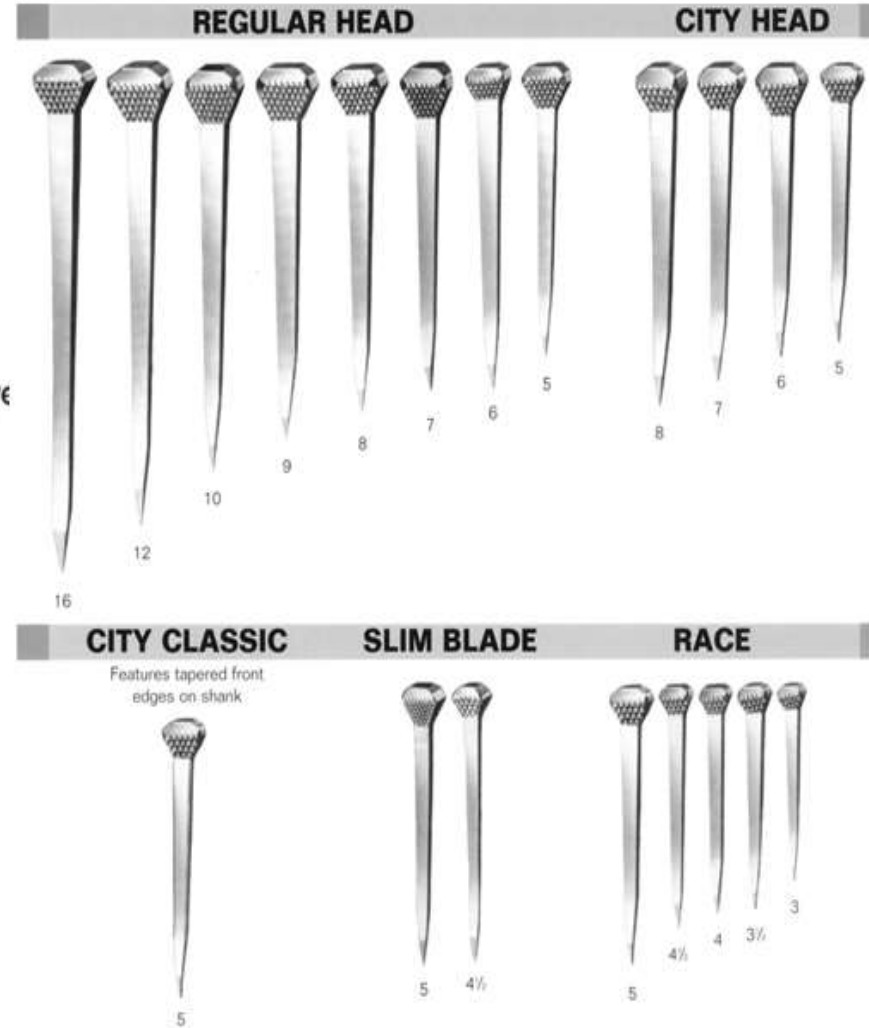
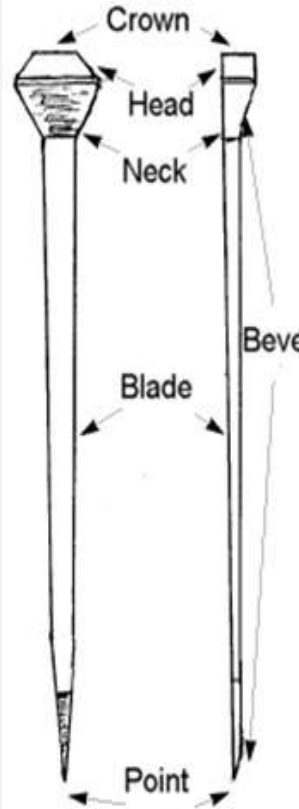
Nails

Horse shoe nails come in variety of sizes and lengths. It takes a practiced eye to tell the difference between them to know when to use which type.

all have a beveled tip that allows the nail to bend as it is driven into the hoof so it will exit through the side of the hoof wall.

City head most common less wall displacement

Slim blade used when hoof wall is thinner.



- Capewell Race Nails are an excellent choice when working on race horses.



Egg bar

- Egg bar shoe provides even more support to the back part of the hoof and leg by extending beyond the heel. It is often used for horses with navicular disease



Heart bar shoe

- Heart bar shoes offer the same advantages of the other bar shoes, only with the addition of frog support, as well. These are often used for horses with laminitis, and I usually add pads or stand-alone packing materials to fill the gaps between the hoof and the frog support.



Rim shoe

- A rim shoe is very much like the regular horseshoe, only with a deep, wide groove through the middle. This groove allows the horse to get a little more traction.



Comfort Fit horseshoe

- This wide, rolled toe shoe gives width and support and also speeds up the breakover if you have a horse that stumbles, or you want to get it away in front a bit quicker. This shoe is very helpful with horses that stumble



References

- **Practical and Scientific Horseshoeing By Frank**
- https://www.viovet.co.uk/knowledgebase/a177-A_Guide_To_Horse_Hoof_Care
- http://www.stockhoffsonline.com/acatalog/Clinch_Cutters.html
- <http://thornsandthistleshomestead.com/wp/the-art-of-hoof-trimming/>
- <https://br.fotolia.com/id/85326709>
- <http://hoofexplorer.com/>
- <http://farriersandiego.com/>
- <https://thekebun.wordpress.com/tag/trimming-goat-hoof/>
- <http://www.happy-horse-training.com/horse-hoof-care.html>
- http://www.thehorse.com/images/content/hoof_anatomy.html
- <http://victoryracingplate.com/product/nails/>
- <http://www.horsedeals.com.au/index.php?p=event&e=19327-Shoes-and-their-uses>