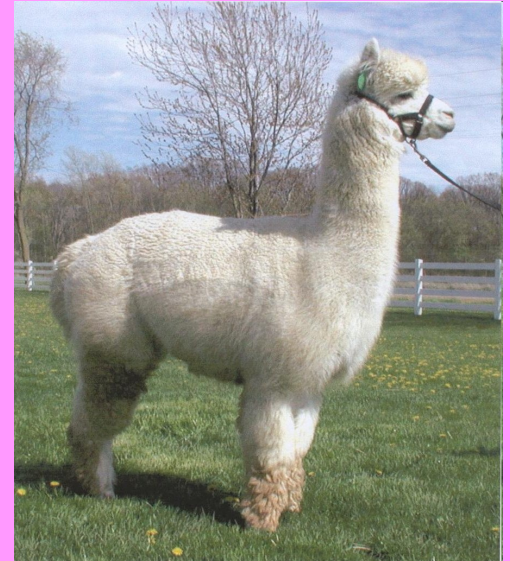


Sara Frazier  
Mrs. Reed  
Physical Science Period 3  
Spring 2010



# Alpacas

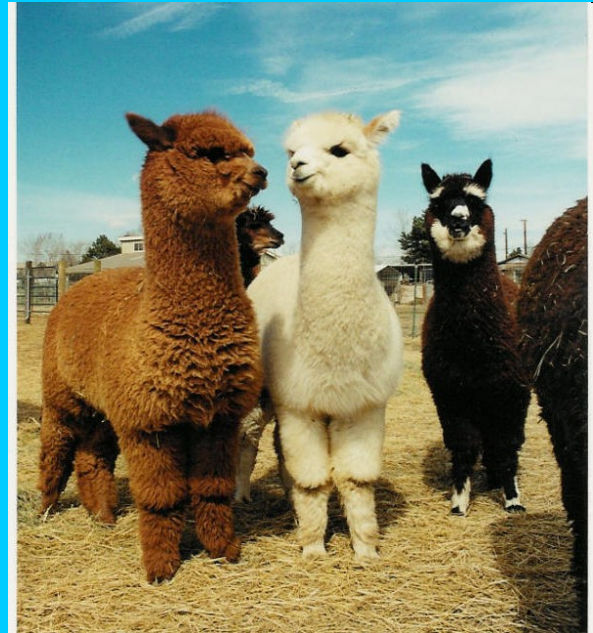


<http://writinggrandmasbook.files.wordpress.com/2009/06/zodiac-al>

<http://www.cccfeeds.com/llamas/alpaca-3052411.jpg>

# Features of the Alpaca.

- Alpacas are related to llamas, which are twice the size of an alpaca have banana shaped ears and are mainly used as pack animals.



<http://purldivers.files.wordpress.com/2009/11/alpacas.jpg>

# Alpaca Life

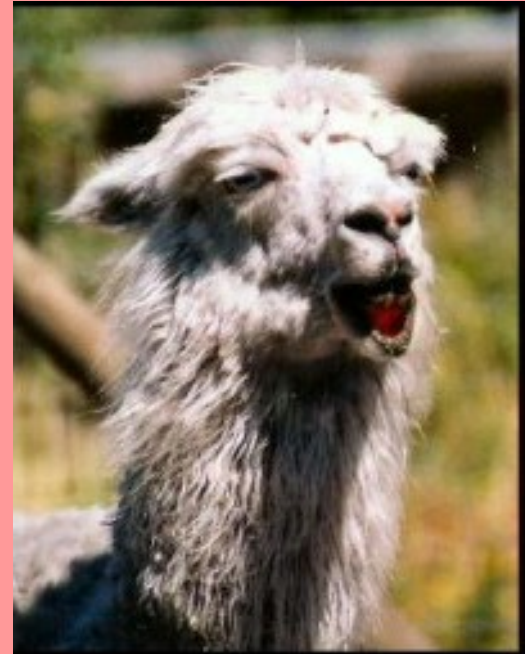
- Alpacas chew cud like a cow, eat hay or pasture and need fresh drinking water .
- They do not need a shed for shelter at night .
- They prefer cooler climates.

<http://img693.imageshack.us/img693/4434/alpaca.jpg>



# Alpaca Spit

- Because alpacas chew cud the spit is regurgitated green grass and smells horrible! They will spit at each other but rarely at people.



# Alpaca Diet

- Alpacas are grazers and like cattle, they chew their cud.
- They have a split upper lip which prevents them from damaging the vegetation's roots.
- They require good quality hay (primarily grasses) supplemented with grain and mineral mixes to meet their proper nutritional requirements.





# Alpacas Personality

- Like all animals, alpacas exhibit individual personality.
- They are herd animals, preferring the companionship of their friends and their established community, and will become stressed if separated from their buddies.



# Bibliography

- [http://www.aragonalpacas.com/alpaca\\_info](http://www.aragonalpacas.com/alpaca_info)
- <http://www.abc.net.au/creaturefeatures/fact>
- <http://www.alpaca.com/alpacacareanddiet.c>
- [http://www.aragonalpacas.com/alpaca\\_info](http://www.aragonalpacas.com/alpaca_info)