



**Goat & Sheep Production and
Management**



Introduction

- According to Barkley *et al*, 2012, chevon is widely consumed throughout the world, especially in developing countries. Sheep and goat meat are the one of the most consumed meat, rather than pork, poultry, and beef.
- Ruminant like goats are highly adaptable in the country. It needs less feed than other ruminants. Goats also multiply faster than cattle and carabaos. They also have shorter gestation period than other ruminants.
- Meat demand in the country is far beyond the animal industry can produce. The importation of other meats (beef and carabeef) is very evident in the country which cause more expenses and lead to a very expensive meat products. Due to a high demand of meat, developing goat industry is necessary.
- Small ruminant production, like goats enterprise, requires good husbandry practices. Sanitation, health, water, shelter and feed are all integral parts of managing a successful goat enterprise.

Advantage and disadvantage of Goat & Sheep Raising

Advantage

- Goats require smaller Capital investment than Cattle.
- Goats multiply faster than cattle/carabaos. Before a goat is 3 years old, she can have given birth to as many as five kids.
- Although a goat is small, she can produce as much as four liters of milk everyday if she is purebred and is given a ration to meet all her requirements.
- Goats require less feed than cows and carabaos. About ten native goats can be fed on the feedstuffs sufficient for one cow. And about 6-7 purebred dairy goats can be fed on the feedstuff sufficient for one dairy cow.
- Goats are usually docile and can be raised by anyone. Where cows/carabaos may be too large for women or children to handle, the goat is just the right size of animal for them to raise.



- Goats are friendly and intelligent
- Goats are clean animals. They do not thrive in filthy places. In addition, they do not eat rotten or spoiled feeds.
- Goats can be tethered along farm fences and boundaries or along the roads and can be confined in pens and given yard clippings and branches of trees and shrubs. A herd can be raised easily in open lands.
- Under orchards and coconut plantations, are good clippers of weeds.
- Goats provide manure for fishponds, farms, and gardens.
- Farmers, in some cases, can use goats as an “insurance” against the failure of their crops.
- A family milk goat can provide just the right amount of milk for the farm family at a very economical price.



Disadvantage

- Goats are easily preyed upon dogs and can be stolen easily.
- Goats eat almost everything. Although this is an advantage, it become more of disadvantage if your goats eat and destroy your neighbors vegetable and orchard plants.
- Goats must be confined to a certain area if raised in urban places.
- Male goats are very odorous.
- Meat goats are very odorous.
- The market for goat meat is not yet as established as for cattle and hogs.
- People are not accustomed to eating goat meat regularly.
- Goat milk, although just as delicious as cow's milk, is not widely known and accepted.



Common breeds of Goat



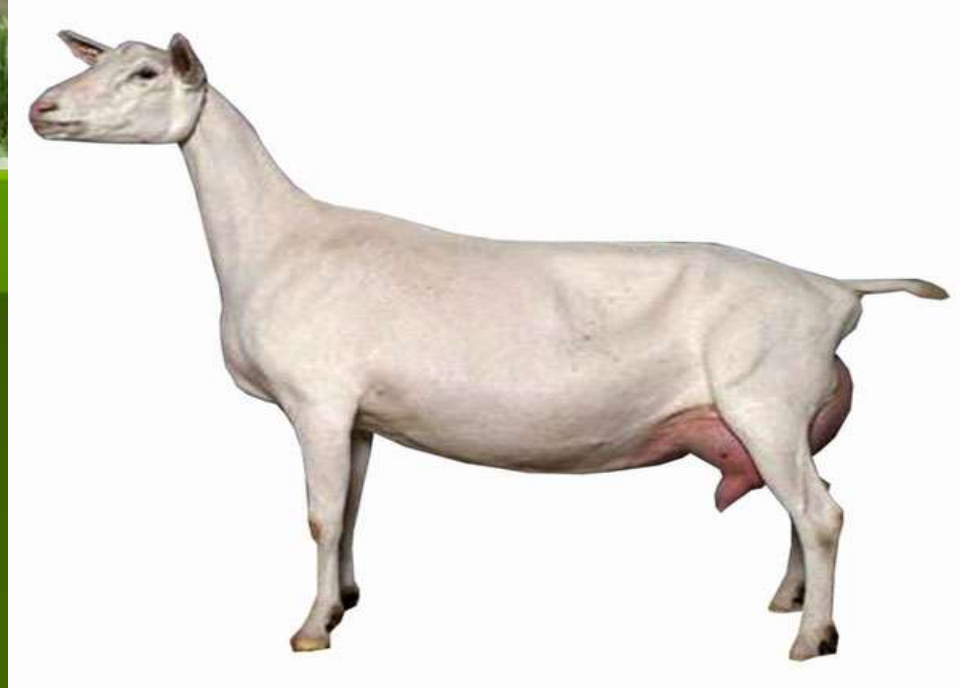
Anglo-nubian

The Anglo-Nubian, or simply Nubian in the United States, is a breed of domestic goat. The breed was developed in Great Britain of native milking stock and goats from the Middle East and North Africa.

Some are born hornless and some are with horns. It has long drooping ears, distinct roman nose and prominent forehead. Its coat color may be black, tan and white, or red and white; but may be any of these colors without markings.

Mature weight	: 65 Kgs.
Milk	: 2 liters a day
butterfat	: 5.6%

This breed is found to have a satisfactory performance in the Philippines.



The Saanen,

A native of the Swiss Alps, is a Swiss breed of domestic goat. It takes its name from the Saanental in the Bernese Oberland, in the southern part of the Canton of Bern, in western Switzerland.

Some are hornless although horned but disbudded ones are preferred. It has a straight nose and erect ears. Its color is either pure or creamy white.

Mature weight	: 65 kgs.
Milk produce	: 5-7 liters “Queen of Dairy Goats”
Butterfat	: 4.3 percent



The Boer goat

is a breed of goat that was developed in South Africa in the early 1900s for meat production. Their name is derived from the Afrikaans word "boer", meaning farmer.

- Boer goats commonly have white bodies and distinctive brown heads. Some Boer goats can be completely brown or white or paint, which means large spots of a different color is on their bodies. Like the [Nubian goat](#), they possess long, pendulous ears.
- They are noted for being docile, fast-growing, and having high fertility rates. Does are reported to have superior mothering skills as compared to other breeds.
- The primary market for [slaughter](#) goats is a 22–36 kg (49–79 lb) [kid](#); kids should reach marketable size at weaning age.
- The kid of a proven fast-growing sire might weigh 36 kg (79 lb) at 90 days, while the kid of a poor-quality sire might weigh only 15 kg (33 lb) at 90 days.
- An average-quality buck will initially be less expensive to purchase; however, it can significantly undermine an operation's long-term [profitability](#).



The Toggenburg or Toggenburger

is a Swiss breed of dairy goat. Its name derives from that of the Toggenburg region of the Canton of St. Gallen, where it is thought to have originated. It is among the most productive breeds of dairy goat.

Mature weight : 52 kls.

Average milk prod'n: 3 liters

Butterfat : 3.8%



The Alpine

is a medium to large sized breed of domestic goat known for its very good milking ability. They have no set colours or markings. They have horns, a straight profile and erect ears. The breed originated in the French Alps.

- Its adaptability to local condition ranks second to nubian.
- Some horns and others are hornless.
- It has erect ears and straight nose.
- It has multicolored coat with no standard markings.

Mature weight	: 56 kls.
Ave. milk prod'n	: 3 liters
Butterfat	: 4.5%



The Nigerian Dwarf goat

is a miniature dairy goat breed of West African ancestry. The original animals were transported from Africa on ships as food for captured carnivores being brought to zoos.

- The height standard maintained by the American Goat Society and the [American Dairy Goat Association](#) requires does to be less than 22.5 inches (57 cm) at the [withers](#), and bucks to be less than 23.5 inches (60 cm) at the withers.
- The Nigerian Dwarf Goat Association states does should ideally be 17–19 inches (43–48 cm) in height, with a maximum allowed height of 21 inches (53 cm), and bucks should ideally be 19–21 inches (48–53 cm), with a maximum allowed height of 23 inches (58 cm).
- Nigerian Dwarf does give a surprising quantity of [milk](#) for their size., with an average doe producing about 2.5 pounds of milk per day. Their milk has a higher [butterfat](#) content than milk from full-sized dairy goats, averaging 6.5% according to the American Dairy Goat Association.¹ Later in lactation, butterfat can go up to 10% or even higher. This makes Nigerian Dwarf goat milk excellent for [cheese](#), [soap](#) and [cream](#) making.



American Lamancha, or more commonly, simply Lamancha or LaMancha,

is a formally recognized breed of dairy goat, first bred in Oregon by Mrs. Eula Fay Frey.



The Pygmy goat

is a breed of miniature domestic goat. The pygmy goat can be used for many different things and that is why a pygmy goat is strictly classified as a multi purpose animal as stated on NPGA or national pygmy goat association.



The Oberhasli

is a modern American breed of dairy goat. It derives from the subtype of Chamois Colored Goat from the Oberhasli district of the Bernese Oberland in central Switzerland.



The British primitive goat
is a landrace of domestic goat native to Great Britain and
Ireland, and is the original goat of the region.



Jamnapari

is a breed of goat originating from Indian subcontinent. Since 1953 they have been imported to Indonesia where they have been a great success. It is bred for both milk and meat.



© 1998 Oklahoma State University

provided by Dr. An Peischel

The Kiko

is a breed of meat goat from New Zealand. Kiko is the Māori word for flesh or meat. The Kiko breed was created in the 1980s by Garrick and Anne Batten, who cross-bred local feral goats with imported [dairy goat](#) billies of the [Anglo-Nubian](#), [Saanen](#) and [Toggenburg](#) breeds. The breeding aims were hardiness, fast growth, and survivability with little input from the producer.



The British Alpine goat

is a breed of domestic goat developed in the early 1900s. A standard British Alpine goat is black all over with white 'Swiss' markings.



The Angora goat

is a breed of domestic goat that is named after Ankara, Turkey, historically known as Angora. Angora goats produce the lustrous fibre known as mohair.



The Beetal goat

a breed from the Punjab region of India and Pakistan is used for milk and meat production. It is similar to the Jamnapari goat. It is also known as **Amritsari goat**.



The Golden Guernsey

is a rare breed of goat from the Bailiwick of Guernsey on the Channel Islands. They were first brought to Great Britain by Rudi Sweg in 1965 and a sub-breed has evolved known as the British Guernsey.



Murciana, also called Murcian, Murcien, Murciene and Royal Murciana is a dual-purpose breed of goat originally bred in the Murcia province along the Mediterranean coast of southeastern Spain.



A **myotonic goat**, otherwise known as the **fainting goat**, is a domestic goat whose muscles freeze for roughly 3 seconds when the goat feels panic. Though painless, this generally results in the animal collapsing on its side.



The **Dutch Landrace goat** breed is one of the original breeds found in the Netherlands. It is related to other northwest European "Landrace"-named goat breeds.



The Kinder is a breed of goat, originating from a cross between a pygmy goat and a Nubian goat in 1985 at Zederkamm Farm in Snohomish, WA.



The Spanish goat, also called the brush goat or scrub goat, came originally from Spain via Mexico to the USA. It is now a meat and brush-clearing type found widely in the United States.



Kamori is a popular goat breed found in the Sindh province of Pakistan. They have a distinctive body structure with long ears and neck and a large body, and a distinctive color.



Photo Courtesy Pygora Breeders Association - Copyright 2003 GoatWorld

The Nigora

is an American breed of small or medium-sized dual-purpose goat, raised both for its milk and for its fiber. It is the result of cross-breeding Nigerian Dwarf bucks with does of mohair breeds such as the Angora



The Valais Blackneck

is a breed of domestic goat from the canton of Valais, in southern Switzerland, and neighbouring areas of northern Italy. The largest concentration is in the area of Visp. It is present in modest numbers in Austria and Germany.



The Dutch Landrace

is one of the original breeds found in the Netherlands. It is related to other northwest European "Landrace"-named goat breeds



The Kalahari Red

is a breed of goat originating from South Africa. Their name is derived from their red coat and the Kalahari Desert. They are generally used in meat production.



The British Alpine goat

is a breed of domestic goat developed in the early 1900s. A standard British Alpine goat is black all over with white 'Swiss' markings.



The Australian Cashmere Goat

breed of domestic goat originating in Australia. Whilst retaining the fertility and hardiness of the bush goat, the Australian Cashmere is quite different in appearance and temperament.



Stiefelgeiss

is a breed of domestic mountain goats originating in the highlands of St. Gallen, Switzerland. Their population is currently less than one thousand. Both male and female Stiefelgeiss goats have horns.



The Barbari goat

is a dwarf meat goat breed that is found in Uttar Pradesh, as well as Gujarat in India and Jhelum and Sargodha districts in Punjab Province, Pakistan.



The Peacock goat

a goat breed from the cantons of Graubünden and Upper Tessin in Switzerland is used for the production of milk. There is little known about the origin of the peacock goat. The discovery of the peacock goat was in 1887.



The Changthangi or Pashmina goat

is a breed of goat inhabiting the plateaus in Tibet and neighbouring areas of Ladakh in Jammu & Kashmir, India. They are raised for ultra-fine cashmere wool but were also reared for meat in the past.



The Bagot goat

is a breed of goat which for several hundred years has lived semi-wild at Blithfield Hall, Staffordshire, England. It is a small goat, with a black head and neck and the remainder of the body white



Breed of Sheep



The Merino

- The breed originated in Spain, but the modern Merino was domesticated in Australia.
- The Merino is an excellent forager and very adaptable. It is bred predominantly for its [wool](#),
- Merino need to be shorn at least once a year because their wool does not stop growing. Merino wool is finely crimped and soft.



Suffolk sheep

- black-faced, open-faced breed of domestic sheep raised primarily for **meat**.
- Mature weights for rams range from 250 to 350 lb (110 to 160 kg), ewe weights vary from 180 to 350 lb (80 to 160 kg).
- Fleece weights from mature ewes are between 5 and 8 lb (2.3 and 3.6 kg), with a yield of 50% to 62%. The fleeces are considered medium wool in type.
- They have black faces and legs, a large frame, and are highly muscular. The staple length of ranges from 2.0 to 3.5 in (51 to 89 mm).



The Rambouillet is a breed of sheep also known as the **Rambouillet Merino** or the **French Merino**.

- The breed is well known for its [wool](#), but also for its meat, both [lamb](#) and [mutton](#). It has been described as a dual-purpose breed, with superior wool and near-mutton breed characteristics. This breed was also used for the development of the "Barbado" or American Blackbelly sheep, which was crossed with [Barbados Blackbelly](#) and [Mouflon](#) for their horns at hunting ranches.



The Southdown

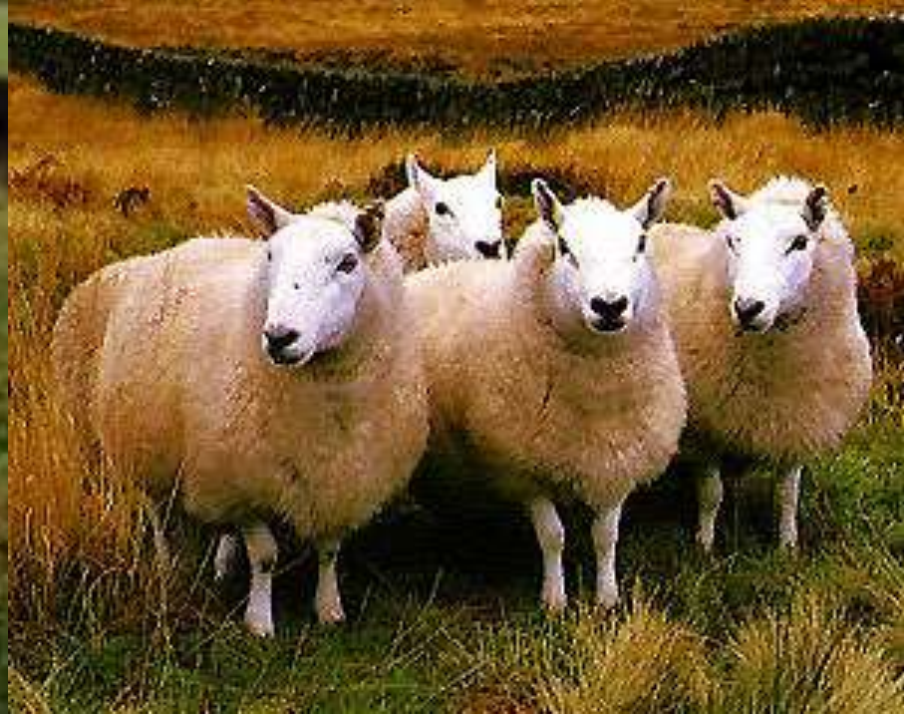
- a small, dual-purpose English sheep, raised primarily for meat. The Southdown breed was originally bred by John Ellman of Glynde, near Lewes, East Sussex, about 200 years ago.
- Mature weights for rams range from 190 lb (86 kg) to 230 lb (104 kg); ewes weigh from 130 lb (59 kg) to 180 lb (81 kg).
- From mature ewes, fleece weights are between 5 lb (2.25 kg) and 8 lb (3.6 kg) with a yield of 40% to 55%. The fleeces are considered medium wool type with a fiber diameter of 23.5 to 29.0 [microns^{\[5\]}](#) and a numerical count of 54 to 60. The staple length ranges from 1.5 inches (4 cm) to 2.5 inches (6 cm).



- **The Dorper** is a South African breed of domestic sheep developed by crossing Dorset Horn and the Blackhead Persian sheep.
- The Dorper adapts well to a variety of climatic and grazing conditions. It reputedly does well in various range and feeding conditions and is also suited to intensive feeding.
- Rams reach sexual maturity at an early age; rams have been observed to start working by five months.
- White Dorper genetics have also contributed to the development of the [Australian White](#) sheep breed.



- **Corriedale sheep** are a dual purpose breed, meaning they are used both in the production of wool and meat.
- Corriedale have a long life span, and are hardy and evenly balanced all over the body. Corriedales are docile, easy care mothers, with high fertility. They adapt well to a wide range of climate conditions. They are large framed and plain bodied, polled (hornless) and have a broad body.
- Fleece from a mature ewe will weigh 10 to 17 lb (4.5 to 7.7 kg) with a staple length of 3.5 to 6.0 in (8.9 to 15.2 cm). After cleaning, a yield of 50 to 60% of the raw fleece weight is common.
- Mature rams will weigh 175 to 275 lb (79 to 125 kg), ewes can weigh from 130 to 180 lb (59 to 82 kg).



- **The Cheviot** is a breed of white-faced sheep which gets its name from a range of hills in north Northumberland and the Scottish Borders.



- **The Katahdin** is a breed of domestic sheep developed in Maine, United States and named after Mount Katahdin - the highest peak in Maine.
- The breed was developed during in the second half of the 20th century by Michael Piel by crossing [St. Croix sheep](#) with various other breeds including the [Suffolk](#), selecting lambs based on hair coat, [meat](#)-type conformation, high [fertility](#), and flocking instinct.
- The average Katahdin ewe weight is 120 to 160 pounds and the ram's weight is 180 to 250.
- Katahdin sheep breed is also resistant to parasites - a trait inherited from its St. Croix ancestors - makes the breed a highly productive, low-cost option for commercial shepherds.



- **English Leicester** is an English breed of sheep. Alternate names for the breed include: Leicester, Bakewell Leicester, Dishley Leicester, Improved Leicester, Leicester Longwool, and New Leicester.
- The head of an English Leicester should be carried well, not too high and should have no signs of horns on the poll (forehead).
- The face is generally in a wedge shape, covered in white hairs and can appear to have a blue tinge. The lips and nostrils should be black. Having black specks on the face and ears is not objectionable. The neck should be of medium length. The shoulders should be strong and level with the back, which should be flat. The legs should be straight and wide apart and the hooves should be black.
- The English Leicester should be free, active and well balanced while in movement. It should appear to be alert and robust, showing style and character.



- **The Texel** is a breed of domestic sheep originally from the island of Texel in the Netherlands. It is now a popular lean meat sheep in the United States, Australia, New Zealand, Uruguay and Europe.
- The Texel is a heavily muscled sheep. It produces a lean meat carcass and will pass on this quality to crossbred progeny. The Texel breed is a white-faced breed with no wool on the head or legs.
- The breed is characterized by a distinctive short, wide face with a black nose and widely placed, short ears with a nearly horizontal carriage.
- They have black hooves.
- The wool is of medium grade (46's-56's) with no black fibers. Mature animals shear fleece weights of 3.5 kg (7.7 lbs) to 5.5 kg (12.1 lbs).
- The most outstanding characteristic of the Texel is its remarkable muscle development and leanness.



- The **Barbados Blackbelly** is a breed of [domestic sheep](#) from the [Caribbean](#) island of [Barbados](#).
- This breed is raised primarily for [meat](#).
- Blackbelly sheep of both breeds are able to tolerate heat and exhibit more stamina than most breeds of sheep. They are fleet of foot and in many ways resemble deer. They are "hair sheep," which means they do not grow [wool](#) but have coarse hair instead. If raised in cooler climates, they often develop a wool undercoat that they shed in the spring.
- Barbados Blackbelly sheep will breed all year round unlike most domestic sheep.
- there is a strong market for their lean and mild-flavored meat,
- They are very disease resistant and parasite tolerant, and these genetic traits have created a demand for Blackbelly sheep in crossbreeding operations. These exotic-looking sheep are a perfect choice for a homesteader's sheep because they do relatively well on poorer [forage](#), can be raised with very little grain, and do not require intensive management.
- Blackbelly sheep range in color from light tan to a dark mahogany red, with black stripes on the face and black legs, belly, inguinal region, chin, and chest, which gives this herbivore its name. Despite being [goat](#)-like in appearance, they are true sheep.



- **The Finnish Landrace, Finn or Finnsheep**

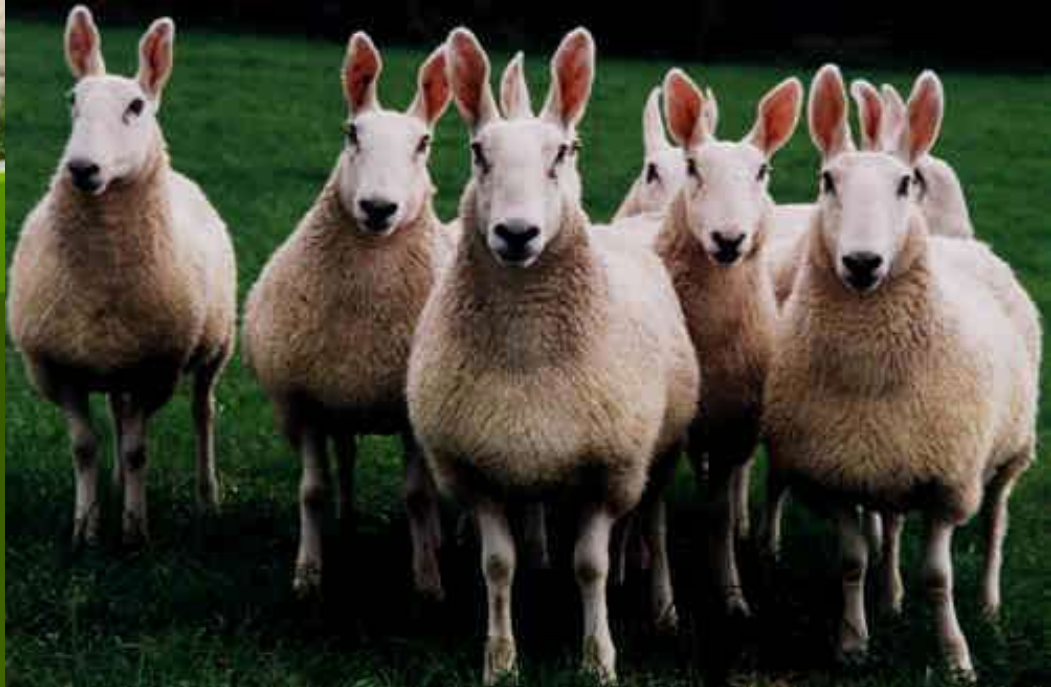
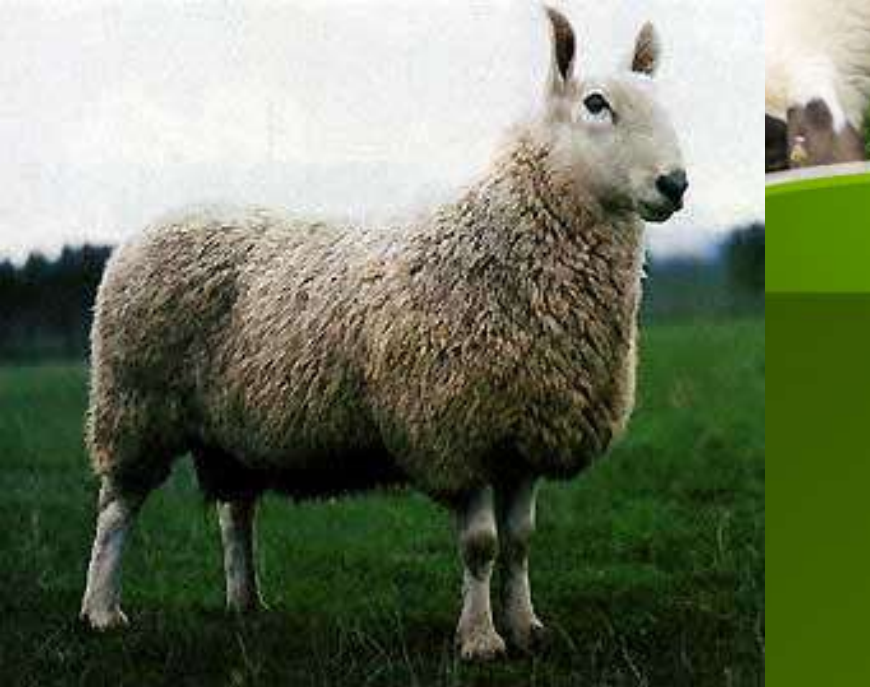
- A breed of native to Finland.
- The lambs are often small, but are vigorous at birth and grow well. The lambs mature early and can be mated at six months of age. Ewes commonly breed out of season and some may lamb twice in a year
- Finnsheep have a similar range of fleece colors to that of Shetland and Icelandic sheep. White is genetically dominant and the most common color. Markings such as white stockings, tail tips, white crown or facial markings including the panda-like eyespot pattern, are common in colored Finnsheep.
- **Meat:** Although not a large sheep, Finns produce a lean, succulent meat with a delicate and mild flavor, even as adults. †
- **Fertility:** Finnsheep mature early and are known for their fertility. Rams can be bred at four to eight months of age, and ewes are expected to lamb at twelve months with multiple lambs. Although twins and triplets are most common, there have been litters born with as many as seven viable lambs!



- **The Hampshire or Hampshire Down** is a breed of [sheep](#) which originated around 1829 from a cross of [Southdowns](#) with the [Old Hampshire](#) breed, the [Wiltshire Horn](#), and the [Berkshire Nott](#), all horned, white-faced sheep — these were native to the open, untilled, hilly stretch of land known as the [Hampshire Downs](#).
- Mature rams should weigh 300 pounds or more and mature ewes should weigh 200 pounds or more in breeding condition.
- Mature ewes yield on average 6 lbs(2.7 kg) to 10 lbs (4.5 kg) fleece that is 25.0 to 33.0 [microns](#) and a spinning count of 46 to 58. The fleece staple length is 2 inches (5 cm) to 3.5 inches (9 cm) with a yield of 50% to 62%.



- **The Romney**, formerly called the Romney Marsh sheep but generally referred to by the local farmers as the Kent, is a breed of sheep originating in England. The Romney is a "long-wool" breed recognized in England by 1800.
- The Romney is in general an open-faced breed with long wool that grows over the legs in full. Head wide, level between ears, with no horns nor dark hair on the [poll](#). Eyes should be large, bright and prominent and the mouth sound. Face in ewes full, and in rams broad and masculine in appearance. Nose and hooves should be black. Neck well set in at the shoulders, strong and not too long. Shoulders well put in and level with the back. Chest wide and deep. Back straight and long, with a wide and deep loin. Rump wide, long and well-turned. Tail set almost even with the [chine](#). Thighs well let down and developed. The face should be white, and the skin of a clean pink colour. Ribs should be well sprung. Legs well set, with good bone and sound feet. Sheep should stand well on their [pasterns](#). The fleece should be of white colour, even texture and a good decided [staple](#) from top of head to end of tail and free from [kemp](#).^[1]
- A Romney may have either a colored or white fleece.
- An English description of size speaks of "big sheep"—ewes, to 85 kg, rams to 110 kg, while the American breed standard calls for ewes at breeding age to be "140 lbs or more" and rams "200 lbs or more."



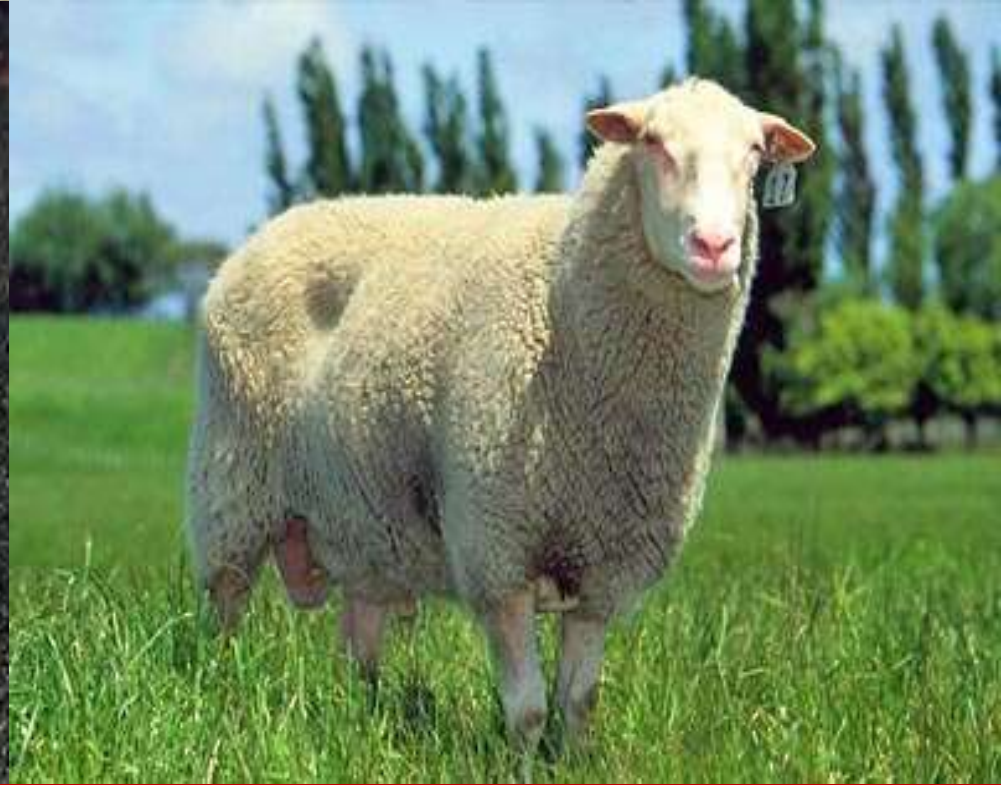
- The **Border Leicester** is a breed of sheep that originated from England.
- Border Leicesters are polled, long-wooled sheep and are considered a dual purpose breed as they produce both meat and wool. Though large in size and robust, they are also docile.
- The live weight of a mature Border Leicester ram will be in the range of 140–175 kg (309–386 lb) and a mature ewe 90–120 kg (200–260 lb). A yearling ewe is around 64 kg (141 lb). Their white wool tends to be very long and by [Merino](#) standards, broad [crimped](#), and in fineness about 32 to 38 [microns](#), and is used for medium to heavy weight garments.
- Border Leicesters are all white with a distinct long body, well developed chest, well sprung ribs and a wide, strong back. The nose should be black and the ears should be large, upright and alert. Feet should also be dark in color. The head and legs should be free of wool and only covered in short white hairs making it easier for shearing. Sheep of this breed should also have a distinct roman nose much like the [North Country Cheviot](#).
- There are key strengths associated with the Border Leicester making them an excellent breed for farmers. They have excellent maternal characteristics meaning that they make good mothers while producing quality lambs. Lambs finish quickly due to their high growth rate and produce high quality, desirable meat. The breed is also hardy and easy to keep and manage.



- The **Dorset or Horned Dorset** breed of [sheep](#) is known mostly for its prolific [lambing](#). It has been known to produce two lambing seasons per year. This type of management, the ewes sold with the lambs, sometimes produces as many as four or five lambs a year.
- The [Cornell University](#) Sheep Program developed and teaches the STAR system to promote frequent lambing with Dorsets.
- The Dorset has a white face with close short fleece. It has a solid build, with broad back and short legs. Originally, both rams and ewes had horns. The [Polled Dorset](#) originated in a herd at [North Carolina State University, Raleigh, North Carolina](#), and a registry of the [polled](#) Dorset was established in 1956. Since then the polled breeders have outnumbered the breeders of the horned variety.
- Both horned and polled Dorsets are all white sheep and medium size having good body length and muscle conformation to produce a desirable carcass. The fleece is very white, strong, close and free from dark fiber.
- Ewes weigh 150 to 200 pounds (70 to 90 kg) at maturity, some in show condition may very well exceed this weight. Rams weigh 225 to 275 pounds (100 to 120 kg) at maturity.



- The **Scottish Blackface** is the most common breed of domestic sheep in the United Kingdom.
- Blackfaces are horned in both sexes, and as their name suggests, they usually have a black face (but sometimes with white markings), and black legs.
- This breed is primarily raised for [meat](#).
- Blackface ewes are excellent mothers and will often attempt to defend their lambs against predators. They are good milkers and are able to yield a lamb crop and a wool clip even when on marginal pastures.



- The **Friesian sheep** breeds are a [heathland](#) type sheep, the land environment in much of Frisia. The group includes related dairy breeds taking their names from, and probably largely originating in, [West Friesland](#) and [Zeeland](#).
- In physical appearance, East Friesians have pink noses and their heads and legs are clear of [wool](#). Their heads are naturally [polled](#). They generally have pale hooves. The most distinctive feature of an East Friesian is its tail, which is described as a "rat-tail" because it is thin and free of wool. Their [fleece](#) ranges from 4–5 kg (8.8–11.0 lb). There also exists a dark brown variation of East Friesians.
- Blackface ewes are excellent mothers and will often attempt to defend their lambs against predators. They are good milkers and are able to yield a lamb crop and a wool clip even when on marginal pastures.



- The **Shropshire breed** of [domestic sheep](#) originated from the hills of [Shropshire](#), and North Staffordshire, [England](#), during the 1840s. The breeders in the area used the local horned black-faced sheep and crossed them with a few breeds of white-faced sheep ([Southdown](#), [Cotswold](#), and [Leicester](#)).
- This breed is raised primarily for [meat](#).
- General Appearance: Alert, attractive, indicating breeding and quality, with stylish carriage and a symmetrical form, showing the true characteristics of the Shropshire, covered with fine, dense wool. Shoulders blending smoothly into the ribs. A full heart girth, strong and straight back with adequate body capacity.
- Constitution: Robust as indicated by width and depth of chest, strength and formation of neck, and by bold active movement.
- Objections: Animals otherwise good, undersized, oversized; long legs; long neck; narrow bodies; dark fibre in wool, dark skins, white specks on ears, face and legs; horns or horn stubs on rams; lack of wool covering on cap or underneath body, face and legs; skin folds in neck area; long, large or drooping ears, thick skinned or coarse; coarse or Roman nose; jet-black face and leg colour; black armpit; lack of wool below hocks and knees.



Welsh Mountain sheep

- Are small, hardy [sheep](#) from the higher parts of the [Welsh](#) mountains.
- The males have horns, and the females are [polled](#) (hornless); they have no wool on the face or legs, and they have long tails.
- The **Welsh Mountain sheep** is usually white with a white face with no wool on forehead or cheek and white legs with no wool below the joint. Females are polled but rams usually have curved horns, although some are polled. The fleece is thick and moderately long and the tails are not normally docked.
- Breeders give a high priority to hardiness, milking ability, mothering quality and lamb survival



The **Polypay**

- sheep breed is a white, medium-sized sheep which was developed in the 1960s at the [U.S. Sheep Experiment Station](#) in [Dubois, Idaho](#).
- in general, Polypay sheep are noted for being a highly prolific, dual-purpose ([meat](#) and [wool](#)) breed.

Decription:

- High lifetime prolificacy
- Large lamb crop at one year of age
- Ability to lamb more frequently than once per year
- Rapid growth rate of lambs
- Desirable carcass quality.

The original breeding stock were taken from the [Finnsheep](#) for their high prolificacy, early puberty and short gestation, [Dorset](#) for their superior mothering ability, carcass quality, early puberty and long breeding season, [Targhee](#) for their large body size, long breeding season and quality [fleeces](#), and [Rambouillet](#) for their adaptability, hardiness, productivity and quality fleeces.



- The **Wiltshire Horn**
 - is a [breed](#) of [domestic sheep](#) originally from [Wiltshire](#) in southern [England](#) raised for [meat](#).
 - They are good mothers and have high fertility. The fact that they do not require shearing or [crutching](#).
 - as even pure-bred lambs can reach slaughter weight in as little as 16 weeks.
 - Males and females both have horns. Ram horns will grow one full spiral each year until maturity.
 - Both sexes are white with occasion black spots on the undercoat.
 - This is a hair breed, growing a thick, coarse coat in the winter and shedding in the summer.
 - Rams weigh about 250 pounds (110 kg) and ewes 150 pounds (68 kg).



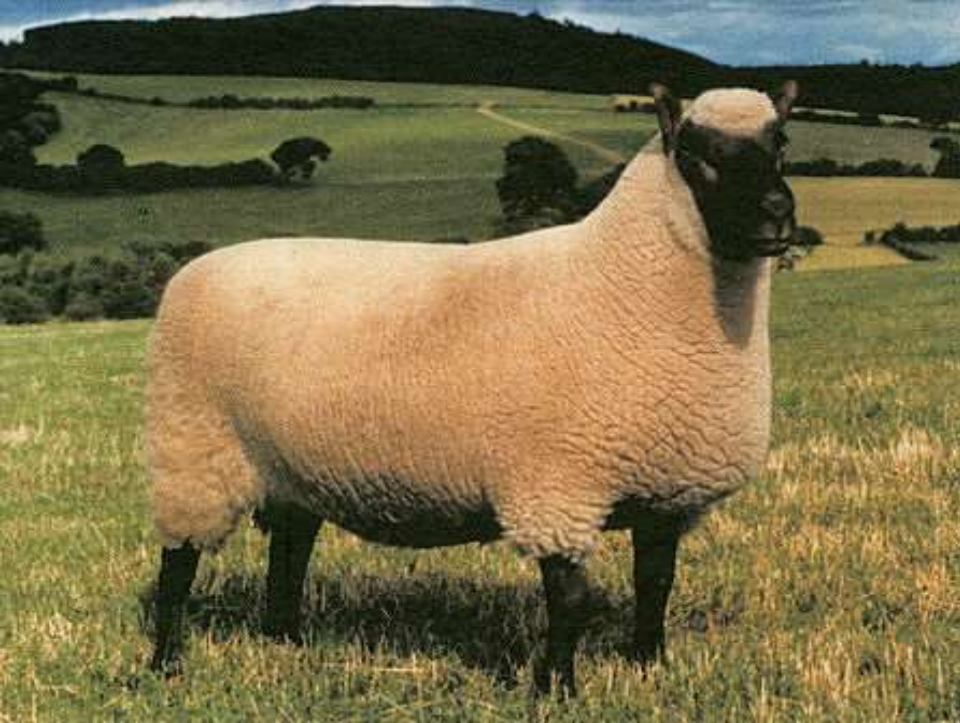
- **The Jacob sheep**

- is a rare breed of small, piebald, polycerate sheep.
- Jacobs may have from two to six horns, but most commonly have four.
- The most common color is black and white.
- Jacobs are usually raised for their wool, meat, and hides.
- Mature rams (males) weigh about 54 to 82 kg (120 to 180 lb), while ewes (females) weigh about 36 to 54 kg (80 to 120 lb).
- The body frame is long, with a straight back and a [rump](#) that slopes toward the base of the tail.
- The rams have short [scrotums](#) free of wool which hold the testicles closer to the body than those of modern breeds, while the ewes have small [udders](#) free of wool that are also held closer to the body than those of modern breeds. The head is slender and triangular, and clear of wool forward of the horns and on the cheeks. The tail is long and woolly, extending almost to the [hock](#) if it has not been [docked](#).
- The legs are medium-length, slender, free of wool below the knees, and preferably white with or without colored patches. The hooves are black or striped. It is not unusual for Jacobs to be [cow-hocked](#).
- They provide a lean carcass with little external fat, with a high yield of meat compared to more improved breeds.



provided by Jack McRae

- **The Targhee**
 - is a breed of domestic sheep developed in early 20th century by the USDA's Agricultural Research Service.
 - Targhee sheep are a dual-purpose breed, with heavy, medium quality wool and good meat production characteristics.
- Mature body weight in the rams is 200 lb (90 kg) to 300 lb (135 kg), with the ewes weighing slightly less at 125 lb (56 kg) to 200 lb (90 kg). Each ewe will average a 10 lb (4.5 kg) to 14 lb (6.3 kg) fleece; it has a fibre diameter of 21 to 25 micrometers and a spinning count of 64 to 58. The staple length of the fleece will be 3 inches (7.5 cm) to 5 inches (11 cm) with a yield of 50% to 55%
- This breed is raised primarily for [wool](#).



- **The Clun Forest**

- is a breed of [domestic sheep](#) originating from the area surrounding the [Clun Forest](#) in [Shropshire, England](#).
- Clun Forest are hardy, adaptable, good [foragers](#), and are long-lived. With sleek heads and wide pelvic structures, Clun Forest ewes lamb easily.
- The breed has a short to medium-length [wool](#) and dark brown faces. They are a multi-purpose animal, kept for [meat](#), [wool](#), and [milk](#).
- The breed's alert and stylish appearance, together with its reputation for hardiness and fecundity.

- The Clun Forest sheep is a medium-sized dark faced sheep that is known for its hardiness, long life, fertility and good mothering abilities. A Clun ewe will usually produce twins which will grow very quickly due to the high butterfat content of her milk.

- The most striking feature of the Clun is the face, which is a rich dark color, rather narrow, and free from wool except for a woolen top knot. The ears are held upright, giving the sheep a very alert and lively appearance. The sheep's powerful build is emphasized by its strong muscular neck and a long broad back. Legs below the hock should be as free from wool as possible, while the fleece itself should be uniform in staple length, colour and texture from head to tail.



- **The St Croix**
 - is a breed of domestic sheep native to the U.S. Virgin Islands and named for the island of Saint Croix. Most St. Croix are completely white with others being solid tan, brown, black or white with brown or black spots.
 - Ewes and rams are polled (no horns), and rams have a large throat ruff. Mature ewes weigh 68 kg (150 lbs) and rams weigh 90 kg (200 lbs). Birth weights average 2.7 kg (6 lbs) to 3.1 kg (7 lbs). Tail should not need docking.
- **St. Croix sheep** can live in a wide variety of climates. They are well adapted to the hot humid climate of the tropics and can survive in cold temperatures. Their hair coat lets them tolerate the heat, and they grow a thick wool coat in cold winter temperatures. Their coat sheds water.



- **The Churra (also known as *Spanish Churro*)**
 - is an ancient [Iberian](#) breed of [sheep](#) from [Zamora](#) province in [Castile and León](#). The ewes produce the milk for Zamorana cheese; the meat is prized also.
- The Churra (renamed "churro" by American frontiersmen) was first imported to North America in the 16th century and used to feed Spanish armies and settlers. By the 17th Century, churros were popular with the Spanish settlers in the upper Rio Grande Valley. Flocks of churros were also acquired by [Navajo](#) through raids and trading, and soon became an important part of their economy and culture.¹



- **Montadale**

- is the name of a breed of [domestic sheep](#) developed in the 1930s by [E. H. Mattingly](#), a [Midwestern](#) commercial lamb buyer who had a dream of developing the ideal sheep.
- The Montadale is considered a dual-purpose breed, raised for both [wool](#) and [meat](#).

- Mattingly selected the [Cheviot](#) and [Columbia](#) breeds as the basis for his project. The Cheviot is a small, hardy sheep developed in [Scotland](#). It is known for its style, correctness, and muscling. The Columbia was developed in [Wyoming](#) and [Idaho](#) in the early 1900s. It is a large, big-bodied sheep with heavy, good quality fleeces. The average Montadale ram weighs 200 to 275 pounds and the ewe weighs 160 to 180 pounds.

- Montadale sheep have very white wool and little lanolin, which makes higher wool yields.



- **The Navajo-Churro breed**

- rams can have two, four, six, or more horns. This is because they possess the [polycerate](#) gene, which is also found in old heritage breeds like the [Jacob Sheep](#).
- They also have the ability to have fused horns. Ewes also can have horns, or nubs called *scurrs*.
- The color can be black, white, or striped. The growth of rams' horns is slow. A full rack takes at least four to five years to grow out.

- Churros come in a variety of colors, including reds, browns, black, white, and mixes, and color may change with age. The color is separated into [fleece](#) color, and the points color (legs and head).
- The Navajo-Churros possess a dual coat, which has an inner and an outer layer. The fleece is composed of an inner coat (80% of fleece), and outer coat that is hair fibers (10-20% of fleece) and kemp (a coarse, opaque fiber, less than 5% of fleece).
- The fleece can often change from lamb to adulthood. Blacks, for instance, often white out with age.
- The Navajo people have used Churro fleece in rugs and other weavings for some time.¹



- **The Delaine Merino**

- is a type of [Merino sheep](#) predominant in [North America](#).
 - It has fewer skin wrinkles than some types of Merino, but still has a fine, oily fleece that extends through the legs.
 - They are hardy and long-lived, with an ability to thrive on the arid ranges of the Southwest United States.
 - This breed originated in the [United States](#) and is raised primarily for [wool](#) production.^[2]
- Delaine has become a most practical Merino sheep on the average farm and is especially adapted to range sheep production in the Western and Southwestern states. They are found throughout the [United States](#) at all altitudes.^[1]



- **The Black Welsh Mountain sheep**

- is a colour type of the [Welsh Mountain sheep](#), bred for [sheep farming in Wales](#).
- Apart from being wholly black, the Black Welsh Mountain is like other Welsh Mountain sheep – small and hardy with no wool on the face or legs; the males are [horned](#), but females are normally [polled](#).
- These sheep are known for lambing easily, as well as good milk and very high fertility.



- The **California Red sheep**
 - is a breed of [domestic sheep](#) developed in the [United States](#) in the 1970s
 - California Reds have reddish tan hairs intermingled with white wool.
 - The California Red can lamb out of season, thus being able to produce multiple lamb crops in a year. It also functions well in hot weather, and is [polled](#) in both sexes.
- The California Red is a medium-size sheep, with rams weighing between 200 and 250 pounds (91 and 113 kg) and ewes between 110 and 140 pounds (50 and 64 kg).
- The animals are polled and the face and legs are reddish-brown and free of wool.
- The ears are pendulous and males sometimes have a slight mane.
- Lambs have reddish-brown wool when they are born, but this fades to oatmeal or beige as they grow. The wool is silky in texture and of high quality, with a [Bradford count](#) of 50 to 60 and a staple length of 3 to 6 in (8 to 15 cm). It is popular with hand spinners and weavers.



- **The Awassi** (Arabic: عواسي)

- is a local [sheep](#) breed in [South-West Asia](#) originated in the [Syro-Arabian desert](#). Other local names can also be Ivesi, Baladi, Deiri, Syrian, Ausi, Nuami or Gezirieh.
- It is a [fat-tailed](#) type and is multi coloured: [white](#) with [brown head](#) and [legs](#) (sometimes also [black](#) or [brown](#)).
- The [ears](#) are long and drooping.

- It is used for a range of products; [meat](#), [milk](#) and [wool](#). However, this breed is raised primarily for milk.

- They have unique physiological characteristics such as resistance to many diseases and parasites, walk long distances over pastures for grazing, tolerating extreme temperatures and enduring adverse feeding conditions.

- Awassi sheep are well-adapted to the poor [Mediterranean](#) pasture and can compensate for under-nutrition during the dry season by using the stored energy reserves in the fat tail. It has a high mothering ability. Due to its high milk producing potential under harsh conditions, the Awassi breed can be used as a sire breed in improving milk production of many indigenous Asiatic and African breeds. The Awassi breed is known to be the highest milking breed after the [East Friesian breed](#).



- **The Royal White**
 - is a breed of [domestic sheep](#) in the [United States](#) developed by William Hoag at Dorpcroix Sheep Farm in Hermeleigh, Texas.
 - It is a hybrid [breed](#) that is bred to produce more [meat](#), less fat, and less [wool](#) with the goal of producing lean [tender meat](#).
 - The breed is disease-resistant.
 - The breed was created using traits of [St. Croix](#) and Dorper.
 - The Royal White grows a hair with a down undercoat in the fall and naturally sheds its fiber in the spring, thus the cost and expense of shearing is eliminated.
- The sheep is pure white with the ears held horizontally and is naturally polled.
- Rams weigh between 185 and 235 lb and ewes between 175 and 210 lb.
- The lambs of this breed are fast-growing, vigorous and lean, producing carcasses with a high cutting out percentage which yield 54% meat at a weight of 50 kilograms (110 lb).
- Research into resistance to [scrapie](#) and to other parasites is ongoing.



• The **Wensleydale**

- is a breed of [domestic sheep](#) that originated in the [Wensleydale](#) region of [North Yorkshire, England](#).
- Possessing a blue-grey face, the breed was developed in the 19th century by crossing [English Leicester](#) and [Teeswater](#) sheep. One of the largest and heaviest of all sheep breeds, the Wensleydale has long, [ringlet-like](#) locks of wool
- The Wensleydale is a large long wool sheep with a distinctive grey black face, ears and legs. The ears are slightly elongated and stand upright.
- They are naturally polled and have a tuft of long wool on top of the head which is not typically sheered (for aesthetic purposes).
- Wool from this breed is acknowledged as the finest lustre long wool in the world.
- Rams weigh about 300 lbs and ewes about 250 lbs.

• Average [prolificacy](#): Yearling ewe - 200% Mature ewes - 250%

• Twin lambs will average 13 pounds each at birth with a growth rate that enables ram lambs to reach 160 lbs. at 21 weeks.

• Average lamb weight at 8 weeks: Singles - 57 lbs. Twins - 48 lbs. Micron count 33-35 Staple length 8-12 inches Yearling Fleece Weight 13-20 pounds.



- **The Soay sheep**
 - is a breed of [domestic sheep](#) island of [Soay](#) in the [St Kilda Archipelago](#), about 65 kilometres (40 mi) from the [Western Isles](#) of [Scotland](#). It is one of the [Northern European short-tailed sheep](#) breeds.
- The sheep have short tails and naturally shed their wool, which can be hand plucked (called rooing) in the spring and early summer. About one kilogram of wool can be obtained from each animal per year.
- Ewes are [polled](#), [scurred](#) or horned and rams are either horned or scurred.
- They are most commonly brown or tan with a white belly, white rump patch and/or white patch under the chin (referred to as the Mouflon or wild pattern).
- This breed has extremely fine fleece and, in contrast to mouflon, the inner fleece is highly developed and it is difficult to distinguish an outer coat.
- The breed also lacks the flocking instinct of many breeds. Attempts to work them using sheep dogs result in a scattering of the group.

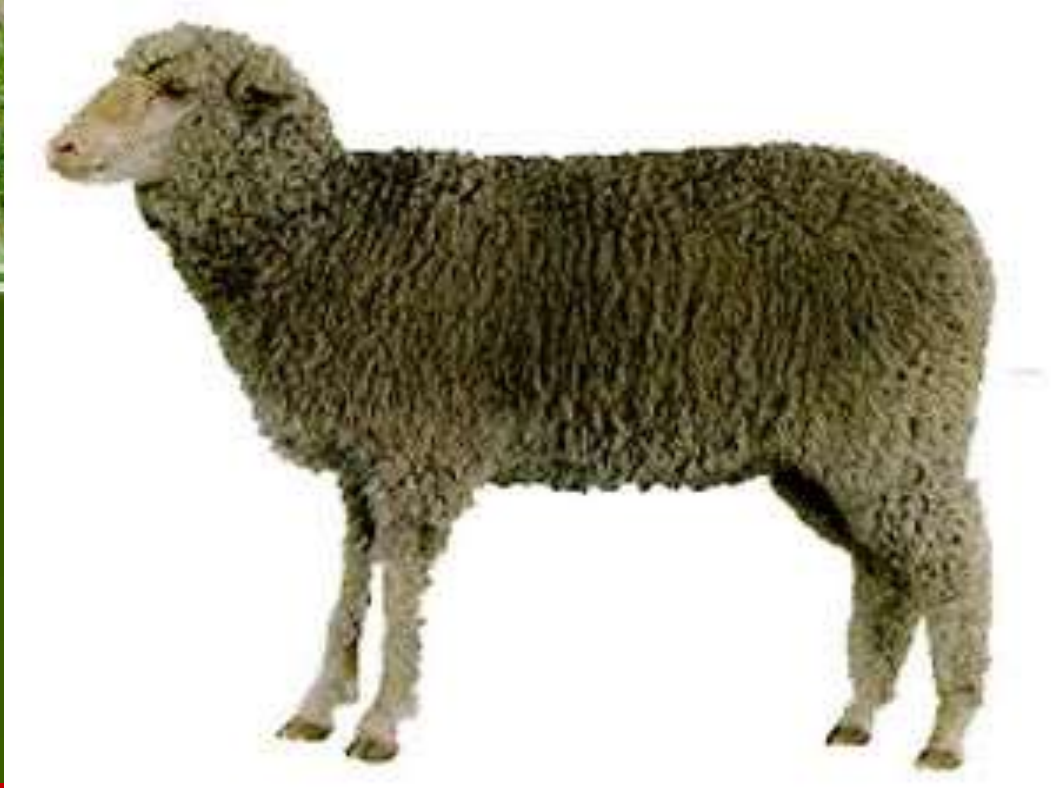


- **The Cormo**

- is an [Australian](#) breed of sheep developed in [Tasmania](#) by crossing [Corriedale](#) rams with superfine Saxon [Merino](#) ewes in the early 1960s.
- The name Cormo is derived from the names of two of the parent breeds, Corriedale and Merino.
- Cormo sheep have a polled, open face, are possessed of a fast-growing, medium frame carrying a fleece of about 18 to 23 [microns](#) in diameter.
- High fertility is an attribute, too.

- The breed is mostly found in the south eastern states of Australia.

- Cormos have also been exported to [Argentina](#), [China](#), the [United States](#), [Italy](#) and [Belgium](#).



- **The Debouillet**

- is a breed of [domestic sheep](#) originating from Tatum, New Mexico. It was developed in the 1920s through crossing [Rambouillet](#) and [Delaine Merino](#) sheep, and the breed's name is a [portmanteau](#) of these two ancestors.

- This breed is primarily raise for its [wool](#).

- Specifically adapted to the arid ranges of the Southwestern U.S., the breed is medium–size sheep with long, fine wool. Ewes are [polled](#) and rams may or may not have horns.^[1]

- Mature ewes will weigh from 125 lb (57 kg) to 160 lb (73 kg) and ram will weigh from 175 lb (79 kg) to 250 lb (113 kg).

- The fleece from mature ewes will weight from 10 lb (4.5 kg) to 18 lb (8.1 kg) with a 35% to 50% yield. The stable length of the fleece is from 3 inches (7.5 cm) to 5 inches (12.5 cm) with a numerical count of 62 to 80 which is 18.5 to 23.5 micrometres diameter.



• The **Shetland sheep**

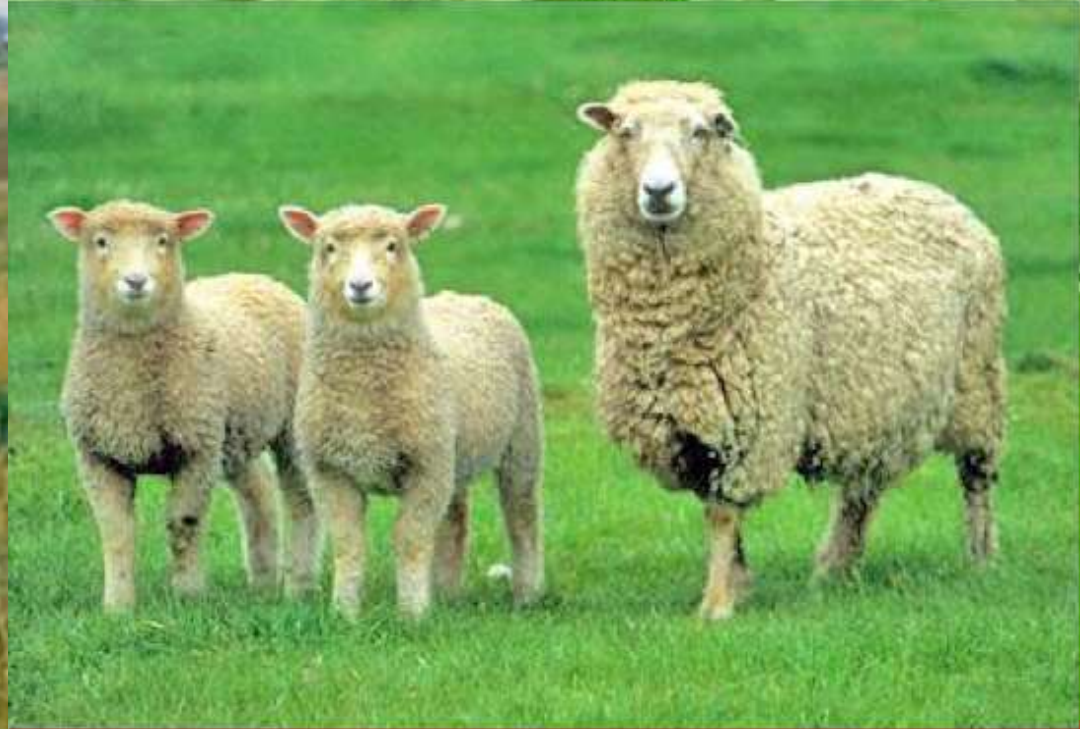
- is a small, wool-producing [breed](#) of sheep originating in the [Shetland Isles](#), but is now also kept in many other parts of the world. It is part of the [Northern European short-tailed sheep](#) group, and it is closely related to the extinct [Scottish Dunface](#). Shetlands are classified as a [landrace](#) or "unimproved" breed.
- This breed is kept for its very fine wool, for meat, and for [conservation grazing](#).

• The Shetland is one of the smallest British breeds. The ewes are usually [polled](#) (hornless) and the rams usually horned, although horned ewes and polled rams do occur occasionally. The breed is noted for its very fine, soft wool and the high quality of its meat, though its smaller size limits its use in commercial meat markets. They are small-bodied animals, with some wool on their faces, noses or legs, but not in excess. The legs are of medium length and finely boned. They have small, erect ears. A distinguishing feature of northern short-tailed sheep is the short, fluke-shaped tail, broad at the base, tapering to a point, and covered towards the tip in hair, not wool.

• Shetlands occur in many different colours and patterns, most of which have particular traditional names. The rams weigh approximately 90 to 125 lb (41 to 57 kg) and ewes about 75 to 100 lb (34 to 45 kg).



- **The Booroola**
 - is a [Merino](#) strain that has a high rate of multiple births.
- Booroola's prolificacy was studied extensively by [New Zealand](#) researchers, who provided one of the first examples of the practical application of [gene mapping](#) in sheep, by mapping the Booroola [gene](#) to [chromosome 6](#).



- **The Coopworth**

- breed of [sheep](#) was developed by a team of scientists at Lincoln College (now [Lincoln University](#)) in [Canterbury, New Zealand](#), to increase lambing percentages of [Romney](#) ewes when mated with [Border Leicester](#) rams.
- The breed makes up the second largest flock in New Zealand. It is also bred in Australia, parts of Europe, and the United States.
- The Coopworth is used for both [meat](#) and [wool](#). An average fleece weighs 5 kg with a fibre diameter of about 30 to 35 [microns](#) being in the coarser range of wools with a staple length of between 125 and 200 mm.
- The live weight of an adult is about 55 kg.

- Coopworth sheep are a medium-sized, dual purpose, longwool breed, with an alert but quiet disposition. The long face is usually clean with a small topknot or bare head and a slightly Roman nose. The body is long with a good loin and hindquarter, light forequarter and a wide pelvis. The fleece, with pointed locks, has a well-defined crimp with bright luster and spinning count of 44-48 (35-39 micrometres) and a staple length of 6-8



- **The Blackhead Persian (also known as Swartkoppersie)**
 - is a [fat-tailed breed](#) of [domestic sheep](#) from [Africa](#).
 - The sheep is originally from Somalia.
 - ¹ The breed is also a type of hair sheep, meaning they do not grow [wool](#) and tolerate heat better than woolled breeds and are raised primarily for [meat](#).
 - The Blackhead Persian has a white body and, as their name would suggest, an entirely black head.
- The Blackhead Persian is a polled breed with both sexes lacking horns. It has a black head, with long pendulous ears, and a black neck and a white body, with a clear line demarcating the two colours. The rump and the base of the tail have an accumulation of fat.
- The breed was specifically bred for the large quantity of fat stored in the tail region which gave resilience in arid conditions and which was prized for cooking.
- On average at maturity, rams weigh 68 kg (150 lb) and ewes 52 kg (115 lb). At birth, rams and ewes weigh about 2.6 kg (5.7 lb). Ewes lactate for approximately 84 days, produce 50 kg (110 lb) of milk with 5.9% fat



- **The Icelandic sheep**

- is a breed of [domestic sheep](#).
- The Icelandic breed is one of the [Northern European short-tailed sheep](#), which exhibit a fluke-shaped, naturally short tail.
- The Icelandic is a mid-sized breed, generally short-legged and stocky, with face and legs free of [wool](#). The fleece of the Icelandic sheep is dual-coated and comes in white as well as a variety of other colors, including a range of browns, grays, and blacks.
- They exist in both [horned](#) and [polled](#) strains. Generally left [unshorn](#) for the winter, the breed is very cold-hardy.
- Multiple births are very common in Icelandic ewes, with a lambing percentage of 175% - 220%.
- Ewes can be mated as lambs as early as five to seven months, although many farmers wait until the ewe's second winter before allowing them to breed. They are seasonal breeders and come into [estrus](#) around October. The breeding season can last up to four months. Rams become mature early and can start breeding as early as five months.



• **The Charollais sheep**

- is a medium to large sized breed used as a terminal sire. The head is pinkish-brown and is usually free of wool but may have a fine covering of pale coloured hair and both sexes are [polled](#). It is long in the back, wedge shaped and well-muscled.
- The breed is fine boned making for a high killing out percentage. The legs are brown, quite short and free of wool.
- On average at maturity, rams weigh 135 kg (300 lb) and ewes weigh 90 kg (200 lb).^[3]

• The fleece usually weighs between 2 and 2.5 kg (4.4 and 5.5 lb) and has a staple length of 4 to 6 cm (1.6 to 2.4 in). The wool is fine and measures 56 to 60 on the [Bradford count](#), with a diameter of 29 to 30.5 microns.^[1]

• The pure bred ram is willing to mate for most of the year and is long-lived. Many rams are still working when aged seven and some live to age ten. The ewes have a long breeding season and are prolific; those lambing in December average 180% while those lambing in February reach 200%. The ease of lambing means minimal stress to both the ewe and lamb and a vigorous lamb keen to suck. The lambs have a rapid growth rate and ewe lambs can be bred at seven months.[!]



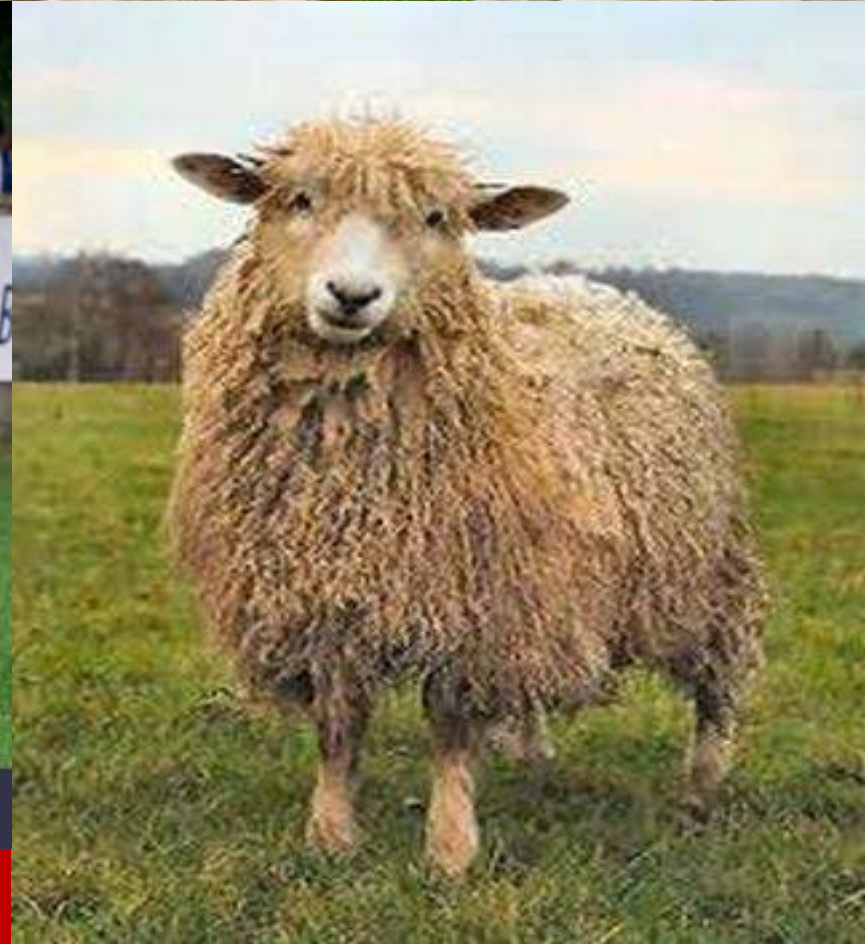
- The **Badger Face Welsh Mountain**

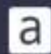
- breed of [domestic sheep](#) bred for [Sheep farming in Wales](#).
- It is a hardy [upland](#) breed known for producing a high percentage of twins and triplets under good conditions.
- It appears in two sub-varieties of its own: the *Torddu* ([\[tɔr'ɔi\]](#), "black-bellied"), which has a white fleece with dark face and belly, and the *Torwen* ([\[tɔr'wen\]](#), "white-bellied"), which has a black body with a white belly and white stripes over the eyes. The *Torddu* is the more common of the two types. In both types, ewes are [polled](#) and rams are horned.^[3] Although this breed grows [wool](#), it is primarily raised for [meat](#).

- This breed is extremely hardy and able to graze rough hills and terrain. On average at maturity, rams weigh 55 kg (121 lb) and ewes 45 kg (99 lb).¹



- The **Bergamasca**
 - is a breed of domestic sheep from the mountainous part of the province of Bergamo, in Lombardy in northern Italy.
 - It originates from the area of the Val Brembana and the Val Seriana valleys, and is particularly associated with the plateau of Clusone. By the beginning of the 20th century it had spread through much of Lombardy; it is now raised in most parts of mainland Italy,
- The Bergamasca is white. Rams weigh 105 kg (231 lb) and grow to 90 cm (35 in) at the withers on average. At maturity on average, ewes weigh 82 kg (181 lb) and grow to 80 cm (31 in) at the withers.



 alamy stock photo

D32CB4
www.alamy.com

- **Cotswold sheeps**
 - are usually calm and friendly.
 - They mostly have white faces. Occasionally faces are mottled with some light gray or tan hairs. Small black spots are permissible on the "points" (non-wooly portions of legs, ears, and face), but the wool itself should be white. Hairs or "kemp" should be absent in the wool.
- Cotswold hooves should be black, but are sometimes streaked with undesirable light or translucent colour. Foot rot is very uncommon in this breed. Cotswold rams occasionally have small scurs (highly discouraged) but no Cotswold should ever have full horns.
- Cotswold sheep do not have the tight-flocking instinct of western range sheep, preferring to spread out and graze enclosed pastures more uniformly. Some strains of the breed are not as prone to internal parasites as others, provided their grazing forages are not excessively short.



- **Gotland sheep**

- are fine-boned and of medium size.
- Gotlands are polled and have no wool on their black heads and legs. Sometimes there may be white markings on the top of the head or around the nose and mouth.
- They have alert medium-sized ears that stand outwards with a small neat muzzle, an even jaw and even teeth.
- Their slender neck and shoulders set smoothly into a level back with good depth and reasonable breadth of body.
- The slender legs are well spaced and upright.
- The tail is short with a hair-covered tip.
- The fleece is fine, long, lustrous and dense and can be all shades of grey from silver to charcoal grey and dark enough to be almost black.
- In the USA "American" Gotlands can also be found in white and moorit (a reddish-brown color). They have a clearly defined even curl (purl) and staple that is soft to the touch.
- Their disposition is docile and friendly, although older rams can become aggressive. The fleece is typically 29 to 34 inches in length, depending on the sex, with 26 inches for